

THE EXPERIMENT IN  
INTERNATIONAL LIVING

SCHOOL FOR  
INTERNATIONAL  
TRAINING

WORLD LEARNING  
FOR INTERNATIONAL  
DEVELOPMENT

WORLD LEARNING  
FOR BUSINESS

# World Learning Odyssey

DONOR RECOGNITION ISSUE

WINTER 2005

## IN THIS ISSUE

2 Susan Plimpton  
elected chair of World  
Learning board

3 Bob Schweich  
promotes diversity in  
The Experiment and SIT

4 Alumni help support  
The Experiment in the  
Chicago area

5 Helping the next  
generation: One  
Experimenter at a time

6 In Memoriam:  
Russell Simpson

7 Marnie Pillsbury  
awarded Experiment  
Citation

9 Donor Recognition  
from July '03 to June '04

28 World Learning  
board appoints  
Bob Chase  
interim president

## Wangari Maathai, World Learning trustee, wins Nobel Peace Prize

When it was announced in October that Wangari Maathai, a World Learning trustee, had won the Nobel Peace Prize, SIT students, Experimenters, and the rest of the globally dispersed World Learning community joined the world in congratulating Dr Maathai for her innovative work in founding and directing the Green Belt Movement in Kenya.

“The Nobel Committee made a leap by looking at the whole field of peace and conflict,” said Jim Cramer, president of World Learning and the School for International Training. “Much of the conflict in the world centers around competition for resources, and I think the committee recognized the importance of the environmental component,” he said.

Mary Davidson, long-time World Learning trustee and Dr Maathai’s representative in the US, added, “In linking  
*Wangari Maathai continued on page 8*

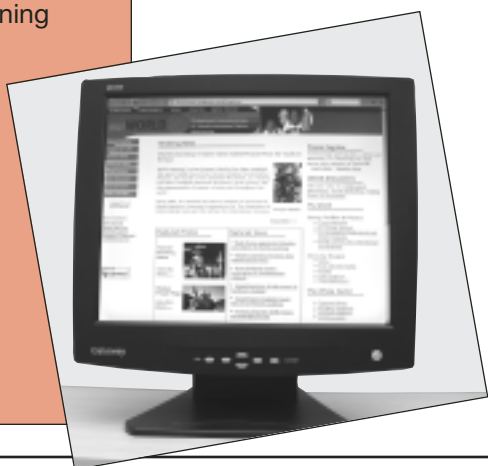


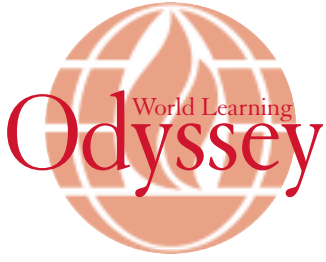
## Visit OurWorld — Our new online community

Many of you have asked for new ways to re-establish contact with your fellow alumni and stay in touch with The Experiment, SIT, and World Learning. You’ve also sought tools that can be used for networking among the many fascinating people who have participated on our programs.

In response, we’ve developed OurWorld and we hope you’ll come for a visit at [www.ourworld.worldlearning.org](http://www.ourworld.worldlearning.org).

*OurWorld continued on page 6*





*Vice President  
for Development*

**ELLEN A. HOLMES**

*Director of Alumni  
Communications*

**BOB LAWSON**

*Writer*

**TRISTAN ROBERTS**

*Database Researcher*

**ONÉ ALM SMITH**

*Graphic Design*

**SUSAN KOCHINSKAS**

World Learning Odyssey  
Vol. 73 • Issue 1

A newsletter for  
World Learning,  
The Experiment in  
International Living,  
School for International Training

[www.worldlearning.org](http://www.worldlearning.org)

©2005 World Learning

Visit OurWorld,  
our online community, at  
[www.ourworld.worldlearning.org](http://www.ourworld.worldlearning.org)

*New board leadership (from  
left to right): Rosamond  
Delori, Vice Chair; Susan  
Plimpton, Chair; Cheryl  
Winter Lewy, Vice Chair*

## Susan Plimpton elected chair of World Learning board

**W**orld Learning's new chair of the board of trustees, Susan Plimpton, has a long history with the organization. Susan traveled to Sweden with The Experiment in International Living in 1963, an experience she said "was very challenging, very positive, and one that launched my fascination in people from other backgrounds and cultures."

When she graduated from Wellesley College, Susan developed an interest in working with international nonprofits, leading her to study at the School for International Training for her Masters in International Administration. During that time, Susan traveled to Tanzania, led an Experiment group to Italy, and worked with other international organizations in Washington, DC, and New York.


Susan went on to earn an MBA from Harvard Business School and began a career in marketing. She recently retired from American Express. Both of Susan's children have participated in Experiment and SIT programs — so it really is a family affair.

"I have a deep emotional commitment to World Learning, and I have personally experienced the impact of much of the work that it does," Susan said of her board of trustees experience.

"We are one of a few institutions in the world that is closely associated with two winners of the Nobel Peace Prize, and I think that says something about the quality of the work that we do," said Susan, speaking about her goals as chair of the board. "I think that with a new World Learning president (see story page 26), we need to knit all of our programs together in a clear vision, expand them in new ways that we haven't thought of yet, and build recognition and support for the institution's impact worldwide."



Photo: Artisan Images

Supporting the organization's endowment is particularly important, Susan said. "The endowment allows the organization to do things it couldn't otherwise do. To the extent that we want to continue to execute our mission in new and exciting ways we will need to expand our financial resources — a key responsibility of all board members," she said. 

*“Changing the world, one friendship at a time”*

## Bob Schweich promotes diversity in The Experiment

Many Experimenters use the phrase “changing the world, one friendship at a time” to explain the mission of The Experiment in International Living. Bob Schweich’s world was changed by one such friendship while on The Experiment in 1953, and he has in turn helped The Experiment change the lives of thousands of other young people.

“I grew up in a segregated society in suburban St. Louis,” Bob said in a recent interview. “In my Experiment group to the Netherlands was a fellow from Atlanta named Ted Alexander. Ted became my first black friend, and we got to be very close. The Experiment fostered an environment that knocked down racial barriers.”

Bob saw that minority participation in The Experiment not only benefited the individual, but could also serve, as in his case, as an important learning experience for the other Experiment group members and their homestay families.

By the 1960s Bob had begun to translate his own experience into a commitment to support minority participation in The Experiment. Having moved to New York City, he sought out local organizations that were already helping talented minority youth attend college.

“Bob Schweich was instrumental in helping The Experiment forge partnerships with leading youth mentoring organizations that support minority youth in New York City, such as Sponsors for Educational Opportunity and Prep for Prep,” said Tony Allen, director of The Experiment.

Bob, who has been a World Learning trustee since 1998, also established and generously funded a permanent endowment fund, the John Wright Minority Scholarship Fund, designed to help provide financial aid to minority students. The fund currently awards up to 10 Experiment scholarships a year.

“Through Bob’s work and influence, the New York model of how we develop strong partnerships with effective youth mentoring organizations and local donors has been

### Bob Schweich

Robert Schweich grew up in a west-side suburb of St. Louis and attended the Wharton School of Business at the University of Pennsylvania as an undergraduate. It was then that he became an Experimenter, first in the Netherlands in 1953, and 1955 in Denmark. During a year at the London School of Economics, he met his wife, Monique, and after a period in the Army, they settled in New York.




Bob began a career on Wall Street as a security analyst and portfolio manager and around the same time became a direct supporter of The Experiment. He has two children and five grandchildren, and an extended family resulting from his time overseas with The Experiment.

After his friend from The Experiment, Ted Alexander, passed away, Bob maintained his relationship with Alexander’s children and made sure that Todd Alexander had the opportunity to go on The Experiment. Todd Alexander, now a successful importer of Italian wines in Georgia, also serves on the board of World Learning.

reproduced in other communities,” said Allen. “We have a model that is unmatched in the field of international educational exchange.”

SIT Study Abroad is another World Learning program that has successfully moved to increase diversity in its programs. This work again found a supporter in Bob Schweich who made scholarship monies available to jump-start new college-level summer programs. He funded the Alexander Family Scholarship, which has supported several Morehouse College students who have participated in SIT Study Abroad programs to France, New Zealand, and Uganda over the past several years.

“We are incredibly grateful to our trustee, Bob Schweich, for his support of scholarship funding,” said Laurie Black, assistant dean for external affairs at SIT Study Abroad. 

## Alumni help support The Experiment in Chicago area

**D**erick Bonewitz met his wife, Adriana Rosado, in 1968 while traveling with The Experiment in International Living in Mexico. Adriana's family was one of The Experiment's host families. Now, years later, he and his wife are honoring that experience by helping send others on Experiment programs around the world.

The Bonewitzes attended The Experiment Reunion in 2000, visiting World Learning's headquarters on SIT's Vermont campus for the first time. "We were fascinated with the real sincerity and enthusiasm of the people we met, both staff and alumni," said Derick. "Right after we came back we both felt that it was the right time to think about doing something for The Experiment to pay back the debt we owed."



### Derick Bonewitz

**D**erick was traveling with Texas A&M University in the summers of 1967 and 1968 to promote a conference on international affairs when the group arranged for The Experiment in International Living to provide homestays. Adriana Rosado's family had been hosting Experimenters in Mexico since the 1950s, including

longtime Experiment supporter and School for International Training professor emeritus Alvino Fantini.


After several years as an officer in the US Army, Bonewitz earned his doctoral degree in biochemical genetics at the University of Texas and then began a post-doctorate fellowship at the University of Cincinnati. In 1979 he and Adriana moved to Libertyville where

The Bonewitzes decided to create a fund in World Learning's endowment, designated for The Experiment, that would support scholarships for high school students from Libertyville, IL, a suburb of Chicago where they live. Experiment Director Tony Allen met with faculty and administrators at the school, and success came much sooner than they expected. The Bonewitzes sent two students on Experiment programs in 2001 and since then have sent 10 more.

"We often invited students and their parents to our home for a get-together either to send them off or welcome them back, and we wanted to involve other alumni in those gatherings," said Bonewitz.

Derick discovered that another Experiment, John Anderson, lived in a neighboring town. Bonewitz got in touch with Anderson, as well as neighbors Charles and Alicia Marshall from Evanston who were also involved in The Experiment.

"We've been talking about how to get other people to think about the possibilities there would be for similar Experiment scholarship programs in other communities," said Derick. The Chicago group has been working with the alumni communications department at World Learning to create a presence in OurWorld, the new online community (see article page 1).

Bonewitz said that their message is already spreading. Julio and Kathy Abreu, whose son Nick went to Costa Rica in 2002 and the Navajo Nation in 2003, have linked The Experiment to the Chicago-area Highland Park High School, where Kathy is a language teacher. 

*Derick Bonewitz with his wife, Adriana Rosado*

Derick worked for Abbott Laboratories in product development.

After retiring from Abbott several years ago, Derick joined Adriana in the translation business she had founded in 1992. Adriana began by specializing in English-to-Spanish document translation, but the business has since expanded to include cross-cultural training.

## Helping the next generation: One Experimenter at a time

A year ago, Dr Sherry Mueller designated World Learning as the beneficiary of her retirement plan. Sherry, who traveled to Germany with The Experiment in International Living in 1963 and is now a World Learning trustee, hoped that her gift would eventually establish a scholarship to help students from rural areas of the US to participate in Experiment programs.

But Sherry's goal was realized much sooner than she thought: Her mother Lucille Mueller surprised her on her birthday by funding the scholarship immediately. With the elder Mueller's generous gift, the Sherry Mueller Scholarship will send its first rural student on an Experiment program next summer.

"The Experiment opened a whole new world for me," said Sherry, who grew up on an Illinois farm. "I was so excited by my firsthand encounters with a foreign culture, the first thing I decided was that I wanted to lead my own Experiment group," she said.

Sherry did lead a group — to the Soviet Union in 1969 — then "wound up making a career in the field of international exchange," she said. Sherry worked with the Institute of International Education, and is now the president of the National Council on International Visitors (NCIV), an organization comprised of 95 community organizations and program agencies including Delphi International, World Learning's international visitor's program.

"My job is to promote and encourage the responsible practice of what we call citizen diplomacy," said Sherry. Her passion for the power of citizens to shape foreign relations has its roots with the Experiment in 1963, she said. "I was blessed

### Planned Giving

Although her mother's birthday gift to Sherry Mueller's scholarship fund was a surprise, Sherry's own giving plan has been prepared in advance.

As part of her estate plans, World Learning was named the beneficiary of Sherry's retirement plan. Making a gift of a retirement plan, such as a 401(k) or IRA, is a flexible, economical, and efficient way to give, and can be easily completed with the submission of a 'change of beneficiary' form, according to Pamela Mauldin, director of annual giving for World Learning's development office. "The estate benefits from a tax deduction, while The Experiment, SIT, and World Learning benefit from your generosity."



*Lucille Mueller and daughter, Dr Sherry Mueller*

"The Experiment opened a whole new world for me."

with such a wonderful family who taught me so much, and a German sister who became like a real sister to me."

"Our goal is to build on this," said Sherry. "Not enough Americans go abroad, and not enough rural Americans in particular." The Sherry Mueller Scholarship is the only scholarship that specifically supports Experimenters from rural areas. 🌐

# In Memoriam: Russell Simpson, World Learning trustee

The World Learning community recently mourned the passing of Russell Simpson, a former trustee who died August 2 in Coral Gables, Florida, at age 77.

A New Jersey native, Simpson served in the Navy and graduated from Yale University and Boston University's law school before embarking on a successful career as a lawyer specializing in corporate and international law. He was named as one of Ten Outstanding Young Men of Greater Boston in 1963, and in 1976 the Securities and Exchange Commission commended him for uncovering corporate fraud, according to the *Boston Globe*.



Russell Simpson

Retiring from law in 1987, Simpson moved with his wife, Bick, to Brattleboro, Vermont. From then through 1991, when Russ and Bick moved to Florida, Simpson was a senior advisor to The Experiment in International Living and oversaw development of an exchange program with Eastern Europe. From 1991–2002 Simpson served as a World Learning trustee.

“Russ felt his responsibilities deeply and exercised great care in fulfilling them,” said Susan Plimpton, current board chair. “He was very committed to the organization and was known and respected by many people in the World Learning community,” she said. “He will be greatly missed.”

## OurWorld

*continued from page 1*

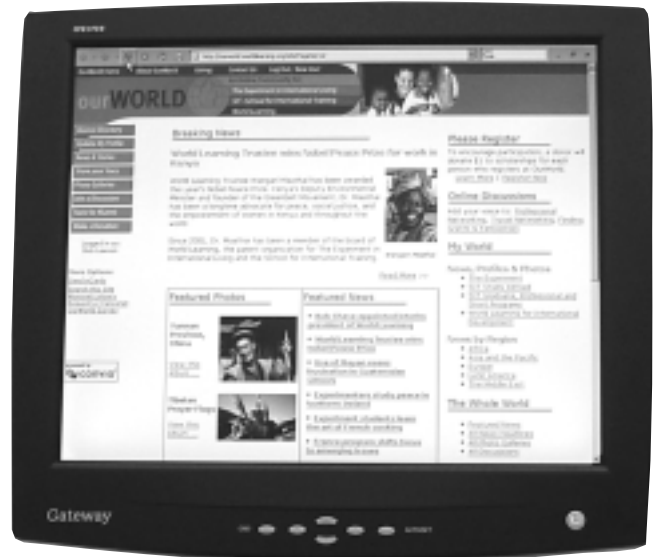
This new online communications tool includes features that allow alumni, parents, and other members of our community to interact, based on past affiliations with World Learning and your current interests. Tools include:

- An alumni directory that helps you reconnect with fellow participants and classmates, while making new contacts with those who share similar work or interests;
- Discussion forums for the exchange of travel information, professional development and more;
- Ways for you to contribute your own news articles, photo galleries, or maintain your own web journal;
- Special-interest web sites for members of specific groups or classes, or for those with common interests in countries, regions, or topics.

OurWorld also enables you to update your contact information, post classnotes, and make online donations. OurWorld will now be used to distribute the organization's electronic newsletters.

As an added benefit, you will be able to send eCards to family and friends using photos taken by Experiment and SIT alumni.

To encourage you to come for a visit, for a limited time one dollar will be contributed to Experiment or SIT scholarship



funds each time a new registration is made at OurWorld. And beyond coming for a visit yourself, you can help support these scholarship funds by encouraging other alumni and parents to visit OurWorld and register.

Visit OurWorld at: [www.ourworld.worldlearning.org](http://www.ourworld.worldlearning.org)

This really is OurWorld. Please visit to meet other members of our worldwide community.

# Marnie Pillsbury awarded Experiment Citation

*Former Experimenter and trustee recognized for outstanding leadership*

Marnie Pillsbury, a long-time World Learning supporter and trustee from 1992 to 2004, was awarded the Experiment Citation by World Learning's board of trustees in October 2004. The Citation is the highest honor the institution bestows on an individual to recognize conviction and unfailing commitment to the mission of the organization.

According to the original Experiment Citation language adopted by the board in 1956, the Citation is awarded "to those individuals who...have dramatized the virtues of sharing the problems, joys, and responsibilities of belonging to a family group which transcends all frontiers."

Marnie was introduced to World Learning in 1960 when she traveled to Germany with The Experiment. "That summer pretty much changed the way I look at the world," she said. "It exposed me to so many different ideas and approaches while showing me how much we all have in common."

In remarks made to the board in accepting the Citation, Marnie reflected on the lasting ties of The Experiment. "One of the first calls I got the day after 9/11 was from my German sister, Ingeborg Bauscher, calling, in tears, to see if I was all right." In 1998 Ingeborg and her family visited the Pillsburys, who took them to Windows on the World at the World Trade Center.

Jim Cramer, president of World Learning and SIT, called Marnie Pillsbury "a model of steadiness, grace and integrity, always to be relied on and ready to take action."

In the board's Citation, Marnie was recognized for her work as co-chair of the Development and Assessment Committees as well as her leadership of The Experiment Initiative, a



Photo: Holly Peterson


*Marnie Pillsbury accepts The Experiment Citation at the World Learning board meeting in early October.*

"That summer pretty much changed the way I look at the world."

project to expand The Experiment's portion of World Learning's endowment.

Asked about her contributions to the organization, Marnie noted connections she had been able to make with other non-profit organizations, foundations, and academic institutions. "I think I've been able to make people more

aware of World Learning and its mission to foster peace and international understanding and its significant impact on people and communities around the world," she said.

Marnie Pillsbury's award is the thirty-seventh Citation given since 1957, and the first since 2001, when James R. Compton was recognized. Other Citation recipients include: Sargent Shriver, Ellsworth Bunker, Senator George D. Aiken, Rudolf Serkin, and Stephen Lowey. 

# Wangari Maathai wins Peace Prize

*continued from page 1*

environmental sustainability and peace, the Nobel Committee has taken a very bold step.”

Dr Maathai founded the Green Belt Movement on Earth Day, 1977, to encourage poor rural farmers in Kenya, 70 percent of them women, to plant indigenous trees. The resulting “greenbelts” have curbed erosion and provided shade, lumber, and firewood in a land too long neglected. Through a system whereby seedlings are provided to village women who are taught how to ensure sapling survival, the movement has produced income for over 80,000 Kenyans. To date the Green Belt Movement has planted 30 million trees in Kenya and in some 30 African countries, Haiti, and the United States.

Dr Maathai thanked the Nobel Committee for her award. “By making this award, the Nobel Committee has placed the critical issues of environmental conservation, democratic governance, and community empowerment and peace before the eyes of the world and for that I am profoundly grateful.”

According to the Green Belt Movement, Dr Maathai was the first woman in East and Central Africa to earn a doctorate. Born in 1940 in Nyeri, Kenya, Dr Maathai studied biological sciences in Kansas, at the University of Pittsburgh, and in Germany before earning her Ph.D. from the University of Nairobi in 1971.

In addition to her work in grassroots organizing, she has spoken before the UN General Assembly on women’s and environmental issues, and has advocated for debt-relief for poor African nations. Among the many awards Dr Maathai has received is the Right Livelihood Award, presented by the Swedish parliament and known as the “Alternative Nobel Prize.” Dr Maathai is a member of the Kenyan Parliament and serves as the Assistant Minister for the Environment.

Dr Maathai joined the World Learning board of trustees in 2001 and has since visited Brattleboro and the SIT campus several times. She has also made presentations for World Learning at the Harvard Faculty Club in Cambridge, Massachusetts, and in Washington, DC. Under her leadership, the Green Belt Movement is working with SIT


Study Abroad students in Kenya. The Green Belt Movement and SIT Study Abroad plan to launch an environmental studies program in Kenya in 2006.

“The work that she has done fits very closely not only with our work but with the mission and values of the institution,” said Cramer. “Wangari promotes peace and social justice; our work is that of enabling communities to take responsibility for their future.”

In the World Learning community, Dr Maathai has exemplified power and inspiration, qualities that did not go unnoticed by the Nobel Committee, according

to Davidson. “A member of the committee told me that one of the reasons Wangari made it to the top of the list of 194 nominees is because she is straightforward, speaks the truth, has an amazing ability to get her message across to whomever she is speaking with, is profoundly inspirational, and is highly respected throughout Africa as a spokesperson for the issues of sub-Saharan Africa,” she said.

Dr Maathai has carried that energy to her work with the World Learning board, said Susan Plimpton, board chair. “Dr Maathai’s courage and lifelong commitment to the environment and to peace is an ongoing source of inspiration to all of us,” she said. “We are proud to count her a colleague.”

On winning the Nobel Prize, Dr Maathai joins other Nobel laureates such as Nelson Mandela, Desmond Tutu, Kofi Annan, Martin Luther King, Jr., Shireen Ebadi, and Jody Williams, an SIT alum. 

“The Nobel Committee has placed the critical issues of environmental conservation, democratic governance, and community empowerment and peace before the eyes of the world and for that I am profoundly grateful.”

*Individual Donors* The generous support of our many individual, corporate and foundation donors makes possible the significant accomplishments of World Learning, The Experiment in International Living, and the School for International Training. This edition of the *Odyssey* newsletter acknowledges contributions made between July 1, 2003 and June 30, 2004. We extend our sincerest gratitude for every generous gift represented on the pages that follow.

*Donors from July 1, 2003 to June 30, 2004*

**WORLD LEARNING  
GIVING CLUBS**

President's Leadership	\$10,000
World Learning Society	\$5,000
Global Ambassadors	\$2,500
Donald & Leslie Watt Society	\$1,000
Odyssey Club	\$500
Sojourners	\$250
Sandanona Club	\$100
Change Agent	\$50
Supporter	\$5

**PRESIDENT'S LEADERSHIP  
CIRCLE**

Robert and Pamela Adams  
Waldo Allen  
Eric Hall Anderson  
Kenneth Bartels and Jane Condon  
Rosamond and Francois Delori  
Barbara Donnell  
Margot Egan  
Sarah Epstein and Donald Collins  
Freeman Family  
Ann and Thomas Friedman  
Bush and Jamie Helzberg  
Barnett and Shirley Helzberg  
Marlene Hess  
Allan Hodgson  
Robert and Judy Huret  
Seng Gee Lee  
Cheryl and Glen Lewy  
Virginia Loeb and James Sperling  
Ann and Michael Loeb  
Michelle Lund  
Linda Marsella and David Blair  
Clare and Howard McMorris  
Betsy and Clifford Michel  
Phyllis and David Oxman  
Marnie Pillsbury  
Moss Plaine  
Susan Plimpton  
Ann Savage  
Robert and Monique Schweich

Ivan Tse  
Christopher and Helen Walker  
John and Betts Wallace  
Susan West  
Donald White  
Christine Wood

**WORLD LEARNING SOCIETY**

Joe and Chrissy Barry  
John Copenhaver and  
Suellen Ward  
Steven Cornwell  
Lawrin and Pam Crispe  
William and Jean Crocker  
Mary Davidson  
Anonymous  
Walter Handelman  
Torrence and Mary Hunt  
David and Sally Kennedy  
Cynthia Lloyd  
Stephen and Nita Lowey  
Joseph Mandato  
Sherry Mueller  
Philip Oppenheimer and  
Mary Close  
John and Thelma Richardson  
Robert Stuart  
Robert Terry and Judith Whitney  
O. Rogeriee Thompson and  
William Clifton  
Kirk Wiltshire  
Nancy Winter

**GLOBAL AMBASSADOR**

Alice and Charles Anthony  
Chloe Breyer-Scholl  
David and Joanne Corey  
James and Mary Jane Cramer  
Nelson and Edith Delavan  
Judith Ehrman  
Susan Garner  
Gabriele Geier  
Richard Hansen and  
Eleanor Erickson  
Anne and John Iskrant  
Stephen Juelsgaard  
Lucille Mueller  
David and Joan Murdoch  
Anne and Scott Nickerson  
Constance Packard  
Marsha and Alan Paller  
Ruth Rauch  
Philip Rauch  
Mark and Elizabeth Richards  
Henderson Riggs  
Eric and Harriet Rothfeld  
Sherwin Stone  
Anne Strawbridge  
Melinda and Henry Taggard  
Katharine and William Van Wie  
Barry and Elsa Waxman

**WATT SOCIETY**

Alice and Walter Abrams  
Todd Alexander  
Peter Alford  
John Archibald  
Robert Austrian  
David and Inez Black  
Margaret Bullitt-Jonas  
Samuel Bunker  
Edith and John Cather  
John Chester  
Vanessa Compton  
Thomas Cowles and  
Rawiwan Kasetrevatin  
Richard and Barbara Dannenberg  
Peggy and Richard Danziger  
Laurence and Jimmi Dawson  
Nelson Delavan

Hazel Denton  
Gwen and Nirmal Dhesi  
Milly and Russell Ellis  
Miles Epstein  
Fred Erisman and Patricia  
Longley-Erisman  
Brittain and Steven Ezzes  
Thomas and Carla Fortmann  
Robert and Shirley French  
Barbara Fujiwara  
Mary Gannon  
Donald Gant  
Charles Goodman  
Gay and John Greer  
Yuko Hamada  
Paula Harbecke  
Patricia Harr  
Phyllis Watt Ingersoll  
Robert Jonas  
Christopher Kramer  
Harriet and Kenneth Kupferberg  
Nancy Lane  
Gordon and Janet Lankton  
Eleanor Lazarus  
Gilbert and Elaine Lessenco  
David and Doris Lichtenstein  
Adelaide Lickliger  
Thomas MacCracken  
Margaret and Francis Manlove  
Tom McDonald and  
Genet Haile-McDonald  
John and Carol McGhee  
Jerome and Roslyn Meyer  
Carl and Kirsten Oppenheimer  
Reed and Catherine Parker  
Michael Pometta  
Margaret Rea  
Jane Rotch  
Michele Rubino  
Carolyn Rusk  
Elise Schweich  
Ernest Van Seasholes and  
Diane Terry  
Julian and Margaret Stanley  
Janet Stanley  
Philip and Marcia Steckler  
Lawrence Steiner  
Peter and Sandy Stettenheim



Photo: Bob Lawson / Viet Nam

William and Coralie Stevenson  
 Potter Stewart and Robin Stern  
 Peter Swift  
 Steve Thomas  
 Nicholas and Joan Thorndike  
 Lisa and David Todd  
 Michael and Roxanne Van Dusen  
 Peter Van Oot  
 Michael and Louise Vick  
 David Walker  
 Peter Walker  
 Jonathan and Amy Walker  
 Akram Wassef  
 Marjorie and Willard White  
 Cheryl Wilfong and Bill McKim  
 Nina and Patrick Wilson  
 Eleanor Winthrop  
 Barbara Wolf and Andrew Schatz

John Grew  
 Amy and Mark Haimann  
 Terri Haliday  
 Linda Hansell  
 Mr. and Mrs. E Hartmann  
 Peter Hauslohner and  
 Diane Garfield  
 Apphia Hensley  
 Elizabeth Herrmann  
 Ellen Holmes and John Ryan  
 Wentworth Hubbard  
 Matthew Johnson  
 Leonade Jones  
 Edward Keefer  
 Susan Kelley  
 Michael Kelly  
 Edward Kuriansky  
 Jo Lesser  
 Richard and Dale Levy  
 Tong Lin

**ODYSSEY CLUB**

Gregory Adams  
 Herbert and Estelle Adler  
 Jesus Alatuna  
 Charles Amorosino  
 John and Cynthia Anthony  
 William and Mary Arnold  
 Pamela Baldwin  
 Carl and Patti Bauer  
 Edith and Erik Bergstrom  
 Peter Black  
 Gordon and Agnes Black  
 Randall Bollig  
 Jeffrey Bowmam  
 Cynthia and John Bracken  
 Richard Burgheim  
 Susan Caldwell  
 Peggy and Paul Cash  
 Melville Chapin  
 Suzanne Charles  
 Joshua Clarke  
 Prudence Clendenning and  
 Robert Clopp  
 Jane and John Colman  
 Elizabeth Conant and Camille Cox  
 Susan Corbett and Steve Kremm  
 Anita Crisp and William Gorham  
 Anna Deming and John Nelson  
 Barbara Donnell  
 James Donnell  
 Cornelius and June Dwyer  
 Rick Ericson  
 Leland Ford  
 Robert and Rebecca Fried  
 Rachel Fried  
 Sarah Fried  
 Sandra and Carlos Frum  
 Rufino and Maria Garcia  
 Maria Garcia  
 Rufino Garcia  
 Edward and Julie Ginsburg

Patricia and Donald Littlewood  
 Richard and Judy Meelia  
 Elizabeth Meers  
 Charles and Mary Merrill  
 Joan Mintz and Robinson Markel  
 Stuart Mork  
 James Naibert  
 Louise Nathan  
 David and Katharine Newhouse  
 Nancy Niemann  
 William and Mary Olson  
 Kathleen and Jules Pagano  
 Elizabeth Peake  
 Anna Pearce  
 Philip Pillsbury  
 Mary Poor  
 Laurie Richards  
 Harland and Ann Riker  
 Susan Ritz  
 Dorothy Rostov  
 Shelly Sailer-Siemer and  
 Darryl Siemer  
 Lisa and James Salzman  
 Tedd Saunders  
 Nicholas Schorsch  
 Robert and Shera Selzer  
 Klaudia Shepard  
 Jo Ann and Samuel Silverstein  
 Edwin and Katherine Smith  
 Jan Solomon and  
 Kenneth Simonson  
 Robert Stableski  
 John and Sharon Stevenson  
 Richard Stollenwerck  
 Christopher Tarantine  
 Humphrey Tonkin and  
 Jane Edwards  
 Priscilla Toomey  
 Dan Tran  
 Catherine and  
 Alexander Traykovski



Photo: Bob Lawson / Nicaragua

John Trevino  
 Nicole Vartanian  
 Traci Vollmer  
 Paul and Betsy Von Kuster  
 Sue Wang and Jason Yin  
 Hilda Warner  
 Paul Weiler  
 David and Betsy Wice  
 Paul Witt  
 Anne Wolfgang

**SOJOURNERS**

Terry Adkins  
 Jak and Lynne Albuquerk  
 Melanie Allen  
 Anthony Allen and Reina Smith  
 Louis Alpern  
 Harriet Archibald-Woodward  
 Leonard and Sarah Bachman  
 Stephen Barefoot  
 Faith Barrington  
 William Bartels  
 Barbara Becker  
 Linda and Lawrence Benjamin  
 Steven and Susan Bralove  
 Michael Brazda  
 Carolyn and Louis Brock  
 Katherine Bryant  
 Barbara Buenger  
 Susan Carlson  
 Judith Chasin  
 Roger Cogswell  
 Catherine Curran  
 William Dant  
 Veronica Darer  
 Katharine and Rohit Desai  
 Virginia Doherty  
 Anthony Drapelick  
 William and Brenda Dreyer  
 Cynthia and Stephen Eccher  
 Lionel Epstein and  
 Elizabeth Streicher  
 George Ewan  
 Jackie Fa'asisila

Ellanor and Matthew Fink  
 Seth and Olja Finn  
 Joyce Francis and Nils Pedersen  
 Barbara Friedberg  
 Willard Fry  
 Priscilla Gaines  
 Patricia Galaskas  
 George and Ellen Galland  
 Robert Gannett  
 Bruce and Ruthmae Gardner  
 Don Hazelton  
 Dr. and Mrs. Herman  
 Richard Hertel  
 Priscilla Hinckley  
 Olivia and Harrison Hoblitzelle  
 David and Karen Hopper  
 Louise Jenks  
 Linda Jergens  
 Alison and Richard Jones  
 Betty Kagan  
 Joan Kass  
 Elizabeth and Andrew King  
 Marily Knieriemen  
 Dorothy Koopman  
 Barbara Lande-Bronfman  
 Jonathan and Bonnie Landman  
 Elinor and James Langer  
 Edward and Barbara Lynn  
 Charles MacCormack  
 Donald and Leigh MacDougall  
 Dawn MacNab  
 Marian and Charles Mahon  
 JoAnn Martin  
 Gwen and Richard Mayer  
 Clinton Mayer  
 Luke and Lynn McCarthy  
 David and Celia McCarty  
 Ann and Philip McLaughlin  
 Judith Mysliborski  
 Bhaskarrao Pant  
 Mario Pascale  
 John and Margaret Payne  
 Wendy Peck and Charles Forer  
 Cynthia Phelps

INDIVIDUAL DONORS

William and Kathryn Piper  
 Reid and Marguerite Pitts  
 Jean and Henry Pollak  
 Stephen and Susan Ralph  
 Margot and Mark Rawlins  
 Sandy Regenbogen-Weiss and  
 Joseph Weiss  
 Thomas and Gulnur Reinhart  
 Mary and John Remensnyder  
 Theodore and AnnaLou Rhoades  
 Nancy Rhodes and Griff Price  
 Bonnie Ricci and James Nicholson  
 Lois and Arthur Roth  
 Lewis Rumford  
 Virginia Russell  
 Marge Ryder  
 Rita and Carol Sator  
 Dolores Savannah  
 Barbara and Herbert Schade  
 Curtis and Magaly Schaeffer  
 Joan Schelling  
 Betsy Schiff  
 Sam Schwartz and Lynn Goldowski  
 Marion Seymour  
 Sara and Ted Siepmann  
 Martha and Stephen Smith  
 Wendell and Monetta Smoot  
 Eleanor Speare  
 Frederick Steinberg  
 Gail Stennies  
 Barbara and Henderson Supplee  
 Masako Takada  
 Martha and Stephen Tallent  
 Karen and David Telleen-Lawton  
 Elizabeth Thomson  
 Richard Todd  
 Alexander Trowbridge  
 Ellen and Glenn Voyles  
 Anne and Thomas Walker  
 Eugenie Wolfson and Bruce Baker  
 Sherley Young

SANDONONA CLUB

Marcus and Barbara Aaron  
 Kenneth Ackerman  
 Diane Adler  
 Anne and Richard Adler  
 Janet Ames  
 Betsy and Michael Amey  
 Janet and Robert Andersen  
 John Anderson  
 Kristin Andes and Thomas Magraw  
 Ann Areson  
 Sandra Armentrout  
 John and Jill Arnstein  
 Ami Aronson  
 Ana Artze  
 Elizabeth and Ronald Atkins  
 Joseph and Johanna Awotwi  
 Ann Babcock

Lorraine Babylon  
 Robert Backus and Caroline Bishop  
 Sarah and Theodore Bacon  
 Ellen and David Bacon  
 Lecann Baer  
 George Bahlke  
 Stephen and Jane Baker  
 Elizabeth Baker  
 John Baker  
 Fay and Ashok Bakhru  
 Celia Bakke  
 Robert Ballard  
 Joan Bamberger  
 Esther Barazzone  
 Amoret and Robert Barbee  
 Everette and Jean Barefoot  
 Bonnie Barhyte  
 Philip Bartels and  
 Susan Stappers-Bartels  
 Sarah Barton-Higgins and  
 Vernon Higgins  
 Michael Barzda  
 Helen Bastedo  
 Naomi Bayer  
 Richard Baynes  
 Kathleen and Ronald Beck  
 Helene Becker and  
 Jonathan Shankman  
 Ann Becker and David Muschler  
 Laura Becker-Lewke  
 Molly Beer  
 Lee and Brenda Berg  
 Henry and Jane Berliiss  
 Mary and David Berman  
 Margaret Bernstein  
 Margaret Bia  
 David and Marian Bicks  
 James and Helen Billingsley  
 Robin Bitters and David Timmons  
 Linda and Richard Bjella  
 Laurie Black and Michael Fulton  
 Sally Blair  
 Nancy Blase  
 Katherine and Don Blenko  
 Bruce and Linda Bodner  
 Sylvia Boecker and Michael Jackson  
 James and Ann Bohan  
 Julie and Mhamed Bokreta  
 Patricia Bonney  
 Clark and Brook Booth  
 Anne Borg  
 Stanley and Donna Borofsky  
 James Botkin  
 Luis Branez  
 Carlton Bremer  
 Marshall Brewer and John Calvi  
 Herbert Brill  
 Martha and James Brogan  
 Fifi Bronstein  
 John and Christina Brooks  
 Donal and Brenda Brown

Julie and Stanford Brown  
 Denise and Morris Brown  
 Cynthia and Franklin Browning  
 James and Nancy Buckingham  
 Virginia Budd  
 Margaret Buresh  
 Eleanor Burke  
 Kenneth and Polly Burns  
 Sarah and Wade Burnside  
 Richard Burtis  
 Davies Burton  
 Catherine and Paul Buppenwieser  
 Charles and Nancy Butterfield  
 Doris Caddell  
 Kathryn Cagney Maio  
 Alexander and Maria Caldwell  
 Toni and Colin Callahan  
 James and Grace Carl  
 Don Carpenter and Donette Reil  
 Frances Cartagena  
 Suzanne and Daniel Cashman  
 Jen-Hung Chao  
 Suzanne Chapman  
 Beth Chapman  
 Jeanette Chapnick  
 Julia Cheever  
 Julia and John Cheshire  
 Alice Childs  
 May and Harrison Chilton  
 Constance Chriss  
 King-Wa and Ming-Tzu-Wu Chu  
 Emma Churchill  
 Elizabeth Clark  
 John Clark  
 Jaimie Cloud  
 Nancy and Charles Clough  
 Shayne Cohen  
 Frederick and Wendy Coleman  
 Rachel Connell and  
 Bruce McEldowney  
 Hilary Cooke and Patricia Halloran  
 William and Margaret Cooper  
 John Corboy  
 Jane Corcoran

David Cordts and Lynne Fiscus  
 Katharine Cornelius  
 Donna Cowan  
 Marianna and William Crawford  
 Sara and Allan Crimm  
 Robert and Ellen Croog  
 Constance Crosson  
 Sandra Cummings and  
 Richard Surwit  
 Charles Cummings  
 Christine and John Curtis  
 Carol Cushman  
 Jacqueline Daigle  
 Francis Dammann  
 Edward and Claudia Damon  
 Colin Davies  
 Louise Davis  
 Diana Day  
 Martha Dean  
 Dawn and Mark Deaton  
 Winifred Defler  
 Carolyn Dejanikus  
 Olcott Deming  
 Vicky and Robert Dickson  
 Dianne and Henry Diemer  
 Peter and Joan Dirlam  
 Roscius and Joyce Doan  
 Mary Dobson  
 Elizabeth Dodds  
 Leigh and Leslie Dolin  
 Rachael and Francis Donnelly  
 Karen and Clark Doran  
 Elyn Dortch  
 Stephen and Tanya Doubleday  
 Kenneth Doucet  
 Stephan Draganis  
 John and Alison Draper  
 Henry Drewal  
 David and Johanna Duclos  
 Robert and Barbara DuFresne  
 Tom and Pam Dyer  
 Nelson and Susan Eby  
 Karen Eckhart  
 George and Patricia Edmonds



Photo: Dr. Andy Lewis / Australia

INDIVIDUAL DONORS

Jane Eisner  
 Paula and Mark Eisner  
 Joan Elliston  
 Susan Elman and Joseph Ronson  
 Elizabeth and Rand Enas  
 Barbara and Mark Engel  
 Marilyn Englander and  
     Curtis Karnow  
 Ruth Epstein  
 Mr. and Mrs. Frederick Erb  
 Anne Esson  
 Diane Evans  
 Dart and Joy Everett  
 Susan Ezrati  
 Garold and Joyce Faber  
 William and Barbara Fairman  
 Elizabeth Falconi  
 Elizabeth Falconi  
 David and Julie Fall  
 Pirkko Fanelli  
 Alvino and Beatriz Fantini  
 Elizabeth and Charles Farnsworth  
 Helen Farrelly and Edward Scott  
 Paul and Jill Ferrara  
 Ellen Fertig  
 John Finney  
 Mr. and Mrs. David Fisher  
 Stephen Fitch and  
     Beth Morton-Fitch  
 Vaden and Grace Fitton  
 Shelley and Patrick Fitzsimmons  
 Molly and Andrew Fleischman  
 Richard and Joni Fleming  
 Ann and Kenneth Fligsten  
 Katharine and Robert Flower  
 Julia Forbes  
 Charles and Lillian Ford  
 Christopher and Elizabeth Forster  
 Edward and Jane Foster  
 Wendy and Walter Foulke  
 Pamela and Alan Fox  
 Linda Frank  
 Robin Free  
 Donald Freeman and  
     Kathleen Graves  
 Sigrid Freese  
 Joseph Friedman  
 Nancy and Richard Fryberger  
 Dell Fuller  
 Steven and Regina Gallotta  
 David Gang and  
     Roberta Hillenberg-Gang  
 Richard and Pauline Gardner  
 Catharine Garmany  
 Kathleen Geissler  
 Eric Gerst  
 Frank and Mary Giamartino  
 Jere Gibber  
 Norma Gibbs  
 Phoebe Gilchrist  
 Audrey Gilles

Lee Gillespie  
 Charles Gillispie  
 Carlyn Goettsch  
 Robert Goheen  
 Stephen Goldberg  
 Jerold Goldberg and Donald Shaw  
 Rita Goldberg  
 Ruth Goldberg  
 Edward and Shahbanu Goldberg  
 Robert Goldfarb  
 Karen Golding-Hunt  
 Reed and Leslie Goldsmith  
 Mitchell Goodman  
 Bruce and Mary Goodman  
 Richard Goodwin  
 Cassandra Gordon  
 Jill Gordon  
 Sheila and Timothy Gothmann  
 Lawrence Graves  
 Terrance and Sally Gray  
 Coleen and Clifford Griffith  
 Nicole Griffith  
 Charles and Julia Grimstad  
 Eunice and Thomas Groark  
 Cynthia Grubb and  
     Edward Grubb  
 James and Suzanne Gullett  
 Paul and Karen Gustafson  
 Susan Gutches and Helen Ingalls  
 Frank Gutmann  
 Laura and Peter Haas  
 Deborah Hadas and Robert Hanson  
 James Haines  
 Molly Haines  
 Richard Hall  
 Cynthia Hallowell  
 Elizabeth and Marcelo Halpern  
 William and Patricia Hamlin  
 Sallie and Phillip Hamm  
 John Hancock  
 Robin Hanes  
 Peter Hanford  
 Lucy Hanks  
 Virginia and John Hansen  
 Conrad and Marsha Harper  
 Jeffrey Harrington  
 Andrew Harrod  
 Ann Harrod  
 David and Elizabeth Hasbrouck  
 Alan Hassenfeld  
 John Hawes and Emily Barclay  
 Eric and Margot Hawke  
 Van and Elizabeth Hawn  
 John Hay  
 Melissa Hays  
 Peter Hayward and  
     Debbie Gassaway-Hayward  
 Mary Hayward  
 Kenneth and Susan Hebson  
 Elizabeth and Herbert Heller  
 Carol Helwig

Bruce Herron  
 Hoyt and Martha Hickman  
 Lucy and Paul Hines  
 Doris Hoelle  
 William and Marie Hoffman  
 Laura Holland  
 Daniel and Myrtice Holmes  
 Anne and Robert Hooper  
 John and Deanna Horsley  
 Janet Houghton  
 Rebecca Hovey  
 Dr. and Mrs. Howell  
 Hunt and Janet Howell  
 Anne and Thomas Hubbard  
 Mr. and Mrs. Joseph Hudson  
 Arthur Humphrey  
 Diane Humphreys-Barlow and  
     Jack Barlow  
 Elizabeth Iandoli and James Misenti  
 Kathleen Idoine  
 Alice Ilchman  
 Maryanne Inouye  
 Martha Izzi  
 Deborah and David Jacobson  
 Martha and Michael Jajuga  
 Susan and Gerald James  
 Elizabeth and Harold Janeway  
 Marlene Johnson  
 Elizabeth Johnson  
 Alexis Johnson  
 John Johnston  
 Carolyn Jones and  
     Thomas Golightly  
 Ginger Jones  
 David Kahler and  
     Linda Garcia-Kahler  
 Virginia Kahn  
 Laura and Jeffrey Kahn  
 Ursula and Frank Karelsen  
 Julie Karp  
 Leah Karpen  
 David Karrick  
 Kenneth Kastleman  
 Ellen Kavee

Kent and Marilyn Kay  
 Michael and Noreen Keating  
 Rebecca and Daniel Keeler  
 Diane and Stuart Keiller  
 Jerrold Keilson and Ellen Silver  
 Doris Keller  
 Eric Keller  
 Susan and Henry Kelley  
 Barbara Kemp  
 Eldon and Sharon Kennedy  
 Jill Kester  
 John and Susan Keys  
 Elizabeth and Bruce Kieffer  
 Arleen and William Kilpatrick  
 Barbara Klaus  
 Barbara and Frank Klein  
 Kathy Klingenstein  
 Dr. and Mrs. Quentin Knauer  
 Julane Knobil  
 Margery Knott and Cris Schamp  
 Frederick and Gretchen Knowles  
 Peggy Koenig and David Graves  
 Ruth Kohn  
 Michael Koonce  
 Susan and Curtis Koster  
 Kecia Kubota  
 Noel and Kaye Kuck  
 Kenneth and Joy Kuhn  
 Harriet Kuhr  
 Hannah Kully  
 Margaret and David Kundel  
 Mary and Louis Kuppenheimer  
 Kathy and Savath Kuy  
 Jeff and Pat Lallas  
 Anne and Thomas LaMotte  
 Julie Landau  
 George Langworthy  
 Cindy and David Lantry  
 Anne Lauriat  
 Jean-Paul Le Men  
 Judith and Joseph Leader  
 Bruce Leader  
 Philip and Patricia Leavenworth  
 Richard Lee



Photo: Bob Lawson / Mongolia

INDIVIDUAL DONORS

Barbara and Kimon Legakis  
 Margaret LeMaster  
 Edwin and Judith Leonard  
 Morelle and Norman Levine  
 Franklin Levinson and  
 Louise Cochran  
 Sandra and T. Dale Lewis  
 Suzanne and Frederick Liebolt  
 David Lifland  
 Charles and Virginia Linsenmeyer  
 Glenda Lloyd  
 Sandra and David Lockwood  
 Thea Lopatka  
 Richard and Janice Losick  
 Sidney and Joan Lovett  
 Evelyn Lovett and Jeffrey Shumlin  
 Elizabeth Lovoy and Gary Rosiecki  
 Elizabeth Lunbeck and  
 Gary Gerstle  
 John and Carol Lyden  
 Lorraine Lyman  
 Jean Lynch  
 Mary Lyons  
 Marion Macdonald  
 Ellen Macdonald-Almazan  
 Patricia and Frank Mackowiak  
 John Maddaus and Elizabeth Johns  
 Marcia and Michael Madden  
 Alysoun Mahoney and  
 Gregory Reiter  
 Henry Mann  
 Katharine and James Mann  
 Karen Manulis  
 Lisa Markowitz and  
 Salvador Garcia  
 Susan Martin  
 Appleton and Caroline Mason  
 Clare Matschullat  
 Ingrid Matuszewski  
 Sarah McArdle  
 John and Elizabeth McBratney  
 Darlene and James McCampbell  
 Nina McCoy  
 Robert and Joan McIlwain  
 Catherine McKenzie  
 Kathleen McKevitt  
 Marilyn McLaughlin  
 William and Ellen McLennan  
 Kathleen McManamy  
 Amanda McNabb  
 Leisa McNulty  
 Kirtland and Susan Mead  
 Michael and Gayle Melich  
 Joyce and Adrian Melissinos  
 Pamela Mendelsohn and  
 Peter Palmquist  
 Betty and Everett Meredith  
 Nicholas Merolla  
 Leslie and Peter Merrill  
 Janet and William Mersereau  
 Sarah Metzger  
 Donelle and Charles Meyer  
 Pamela and Anthony Meyers  
 Eve Michel and Alfred Milanese  
 Carolyn Mikels  
 Judi and Roger Miller  
 Calvin and Molly Miller  
 Ann and O'Malley Miller  
 Marilyn and Lee Miller  
 Matilda and Peter Mitsakos  
 Mary and Robert Moffett  
 Nancy Molitor  
 Gail and Philip Moloney  
 Nicholas Montalto  
 Howard Moore  
 Axson Morgan  
 James and Anne Morganstern  
 Sharon Morrison  
 William and Kate Morrison  
 Sheila Mosher  
 Theresa Mouquin  
 Susan Mozena  
 Manly and Luigi Mumford  
 Lucy Murray  
 Peter and Patricia Mustich  
 Nina Myers  
 Randa and Daniel Nachbar  
 Gerald and Denise Nagle  
 Julianne Neaverson  
 Janet and Steven Neckyfarow  
 Francis and Virginia Neelon  
 Pamela Nelson  
 Eric Newman  
 Dana and Jeanine Niehaus  
 Karen Noble  
 Austin and Marianna Nothern  
 Mary Novie and Cary Hersh  
 Randall and Carol Nunnelly  
 Cynthia Ochoa  
 Richard O'Connor  
 William Orr and  
 Nancy Lyford-Orr  
 Carrol Otto  
 Sandra Owens  
 Roberta Owens  
 Diana Palmer  
 Adrienne and Robert Parker  
 Stephen Parker  
 Priscilla Payne  
 Gregory Peach  
 Susan Peck  
 Patricia and Ken Pell  
 Judith Perdue  
 Jane and John Perl  
 Howard and Anne Perlow  
 George and Beverly Perrine  
 Maude Pervere and Samuel Miller  
 Jane Peuss  
 Leland and Ruth Phelps  
 Theodore and Salote Pierce  
 Peter Piness  
 Harold and Kay Pitt  
 Richard Plass  
 Karen Polenske  
 Helen and Lawrence Pomeroy  
 Barbara and William Porter  
 Kathleen and Ronald Potier  
 Susan Prescott  
 Judith and Stephen Price  
 Cheryl Price  
 Martha and John Prince  
 William Prioleau  
 Ann and Gabriel Puyana  
 Barbara Pyne and Chris Herron  
 Karin Quick  
 Susan and Kanti Rai  
 Roger and Elaine Ralph  
 Ray and Deborah Ramey  
 Roland Ransom  
 Suzanne and Charles Rebick  
 Mary Redmond  
 Byron and Roxanne Reeves  
 Joyce Reilly  
 Jean Reinhart  
 Joan Reynolds  
 Margaret and Leland Rice  
 Sarah and Craig Richardson  
 Jacquelin and Robert Riley  
 Sylvia Robin  
 Judith and Kirk Robinson  
 Ann Roemer  
 Suzanne Roman  
 Louise and David Rose  
 Gay Rosenblum-Kumar and  
 Dinesh Kumar  
 Wendy and Benjamin Rowland  
 Elizabeth and Bernard Royce  
 William and Barbara Rugg  
 Cynthia Russell  
 Norman and Vivianne Russell  
 Judith and Jeffrey Rycus  
 Mark Sanderson  
 Robert and Mary Saner  
 David Sanford and Valerie Lorig  
 Linda Sanger  
 Marilyn Saunders  
 Sandra Savage  
 Harriet and Arthur Savage  
 William Sawyer  
 Andrew Sawyer and Carol Bingham  
 Ann Scala  
 Jane and Fred Schlegel  
 Nancy Schlegel  
 Ross Schlueter  
 William Schneider  
 Ann Schneider  
 Irvin Schorsch  
 Nicholas and Shelley Schorsch  
 Joel Schram  
 Joan Schreder  
 John and Barbara Schubert  
 Timothy Schwartz  
 Marnie Schwartz  
 Sharon and William Schwarze  
 Michael and Joyce Sclafani  
 John Scott  
 Nancy and George Scoville  
 Margaret and Contee Seely  
 Padi Selwyn  
 Rosalie Seton  
 Norma and Melvin Shakun  
 Judy Sharkey and Carolyn Layzer  
 Thomas Sheehan  
 Richard and Jane Sherwin  
 Geoffrey and Eugenie Shields  
 Barbara and Edwin Shifrin  
 Patricia Shoemaker  
 Harriet Shorb  
 Sarah Shores  
 Ann Showan-Slade and  
 Edwin Slade  
 Ivan Shulman  
 Cynthia and Rob Shurtleff  
 Sandra Siegel  
 Peter Silverman and Janet Heettner  
 Jane Simon  
 Peter Simpson  
 Mary Jane and Donald Skinner  
 Vladimir Slutsker  
 John and Susan Smith  
 Deborah Smith  
 Susan Smith  
 Nancy Smith  
 Mr. and Mrs. Snowdon  
 Louisa and Richard Snowman  
 Lisa Soldat  
 Jill Solomon and Robert Blank  
 Jean and Harold Somerset  
 John Sommer  
 Doo Hyun Song  
 Marcia and Davis Spencer  
 Cynthia Spoon and Robert Walker  
 Lee and George Sprague  
 Frank Sprole  
 David Stahl  
 Judith Stavisky and Alan Schiff  
 Ethel Stears and Robert Richards  
 Kathleen Stephenson  
 Hedley Stothers  
 Barbara and Carlyle Stout  
 Julie and Ned Strong  
 Eric and Jeanne Sturley  
 Edy Sucipto and Mony Nou-Sucipto  
 Harriet and Richard Sullivan  
 Susan Sully  
 Shelley Supplee  
 Catherine Sykes  
 Robert Sykes  
 Philip Tabbiner  
 Mary and Earl Tanner  
 George and Margaret Tanner  
 Michael and Theresa Taylor  
 Beth and David Terry  
 Candace Thierry

Martha Thimm  
 Emerson and Kathryn Thomas  
 Hayward and Phyllis Thomas  
 Judith and John Thoms  
 Dorothea and Melvyn Thorne  
 Charles Timms  
 Hector and Hamwattie Tiwari  
 Ilene Todd  
 Susan Treiman  
 Pamela Trimmingham  
 Julie Tucker Strong and Ned Strong  
 Detlev and Dorothy Vagts  
 Stephen Van  
 Carole and

Michael Van de Kerckhove  
 Marjorie Van Leuvan  
 Herbert and Jean Varnum  
 Deanne and Thomas Violich  
 Anne Waasdorp  
 Guy and Helen Wachtel  
 Arne and Gail Wagner  
 Kristen Walls  
 Carol Walter  
 Emily and Mitchell Wander  
 Charles Watts  
 William and Virginia Weaver  
 Paul Weber  
 Mariana and Frank Weinhold  
 Jeanne and Joseph Wentling  
 Anne and Christian Wessling  
 Sara Wetzel  
 Elliot and Deborah Wheelwright  
 Susan Whipple  
 Monroe and Carol Whitaker  
 Wendi White  
 William and Douglas Whitmarsh  
 Otis Wickenhaeuser  
 Peter and Anne Wilke  
 Otto and Vann Williams  
 Georgina Williamson  
 Brent and Sharman Wilson  
 James Wilson  
 David and Katherine Wilson  
 David Woodbury

George and Elizabeth Woodman  
 Joan Wright  
 Norman and Nancy Wulf  
 Anna and Richard Wyatt  
 Elizabeth and Robert Yacubian  
 Eileen and Joel Yager  
 Paul and Penny Yau  
 Delia Ybarra  
 Robert and Susan Youker  
 Everett and Astrid Zabriske  
 William Zenko and Kathleen Ryan  
 Ann Zielinski  
 Elizabeth Zorski  
 Ellen Zunon

**CHANGE AGENTS**

Irv and Pat Ackelsberg  
 Jack Ackerman  
 Albert and Susan Adams  
 Zillah and Robert Alber  
 James Alger  
 David and Carol Allen  
 Anne Almy  
 Joseph and Dorothy Ambrose  
 Margaret and Albert Anderson  
 Anonymous Donor  
 Jeanne Ansley  
 Miriam Apfel and Andrew Feigin  
 Alice and Richard Appen  
 Rebecca Argall  
 Elizabeth Arnold and John Kelley  
 Kenneth Arnold  
 Elaine Arnold and Jeffrey Lamia  
 Paula Atkeson  
 Kimberly Augsburger  
 Virginia Avery  
 Marcia and Scott Babcock  
 Edward and Sharon Ballen  
 Mary Ann Barbieri  
 Christine Barinka  
 Jean and Elliott Barker  
 Celia Barletta  
 Susan and Robert Barnum  
 Maxine Barry and David Harnish

Thomas and Patricia Bass  
 Katharine and Charles Bassett  
 Anne and Richard Beals  
 Kathy and Paul Belosh  
 Max and Beverly Benne  
 Louise and Marion Besch  
 Channing and Marie Bete  
 Henriette and Robert Binswanger  
 Sherry and Peter Bishko  
 Lucinda Bishop  
 Jean and Angus Black  
 Bonnie Blair  
 James and Lisa Blake  
 Karen Blanchard  
 David and Norma Blecker  
 Mr. and Mrs. David Bloom  
 Theodore and Mary Bloom  
 Frederick and Judith Blue  
 Harriet Blume  
 Jon and Patricia Booth  
 Anne Booth  
 Edward and Betsy Bouton  
 Hollie Bowen and Paul Love  
 Cynthia Bowman  
 Diane and Peter Boyer  
 Glenn and Rose Boynton  
 Rhenita Brade  
 Sara and Derek Bradford  
 William and Nelly Bradley  
 Richard Bradspies  
 Victoria and Roger Brady  
 Carlos and Maria Isabel Braga  
 Betsy Bragg  
 Ellen and Michael Breslow  
 Kenneth and Linda Briggs  
 Richard Briggs  
 Mr. and Mrs. Fletcher Bright  
 Judith and Sidney Brilliant  
 David and Barbara Bristle  
 Ann and Anton Brockelman  
 Peter and Kathryn Bromley  
 Drew and Charlene Brown  
 Matthew Brown  
 Kelly Brown  
 Elizabeth Brownstein  
 Marilyn Bruton  
 Bruce and Dolores Bryant  
 Raymond Bub and Susan Nykiel  
 Jane Buckingham  
 Peter and Ginny Buesseler  
 Evan and Anita Bukey  
 Elizabeth Burr  
 Warder and Julia Cadbury  
 Russell and Jean Cahill  
 Myra Callahan  
 Judith Campbell  
 Jennifer Campbell and  
 Stephen Romance  
 Ann Campbell  
 Robert Campbell  
 Rachel Cantor

Jan Capps  
 Jerry Carbone  
 Terence and Kathleen Carle  
 Ellen and John Caronna  
 Monika and Hamilton Carothers  
 Walter Carroll and Ann Maggs  
 Ann Carter  
 Robert Carvutto  
 Kevin Casey  
 Amy Casher  
 Karen Cavanaugh  
 Neil and Margaret Childs  
 Geoffrey Childs  
 Tonya and Spencer Chrislu  
 Arthur and Margaret Christensen  
 Elizabeth Christie  
 Kelly Church  
 Sara Clark  
 Gale and Guy Clifford  
 Andre and Giselle Clouatre  
 Elizabeth and Geoffrey Cobham  
 Adria and William Cohen  
 Elizabeth Cole  
 Ann and William Collier  
 Martha Collins  
 Michal Commanday  
 Charles and Nancy Conner  
 Margaret and Kenneth Conrow  
 Ann Conroy  
 William and Coleen Cook  
 Clifford Cooley and Anne Martin  
 Cynthia and William Cooley  
 Jennifer Coplon  
 Marilyn Corrigan  
 Michael and Sally Costello  
 Audrae Coury  
 Lisa Cowie  
 Mark Cozad  
 Forrest and Shelly Craig  
 Catherine Crane  
 Kathryn and Garry Crane  
 Richard and Antje Cripe  
 Eldon Crowell  
 Shirley and John Cunningham  
 Ruth Cunningham  
 Charles and  
 Elaine Curry-Smithson  
 John and Eleanor Danforth  
 Robert and Claire Dankoff  
 Nancy Davidson and  
 Thomas Kensler  
 Susan Davidson  
 Dorothy and Hubert Davies  
 John and Alice Davies  
 Margaret Davis and Peter Rice  
 Cornelia Day  
 Gary Delgado and Marcia Henry  
 David and Deborah Denby  
 Ellen and David Dennis  
 Margaret Dewhurst  
 Cheryl Diallo

Photo: Bob Lawson / Viet Nam



Gilberte DiAquoi  
 Ana Dickey  
 Eleanore and Caleb Didriksen  
 Obed Diener  
 Karen Diop  
 Sharon Dirlam and  
 John McCafferty  
 Patricia Dombrink  
 Judith Donovan  
 Linda and William Donovan  
 Omiyinka Doris  
 Marjorie and Leete Doty  
 Gretchen and Dennis Doucette  
 Donna Downing  
 Roger Drexler  
 Carol Drexler  
 Daniel Drish and Ron Lenker  
 Paula and Lawrence Dube  
 John and Sandra Duffield  
 Bina Dugan  
 Sarah and Michael Durso  
 Deidre Dutcher  
 Mary Dvorsky  
 Laurence Ebner  
 Ronald and Rebecca Eiseman  
 Kat and Eric Eldred  
 Eric Elliston  
 Alysa and Craig Emden  
 Mary and David Emerson  
 Mr. and Mrs. Irvin Emerson  
 Erik Engel  
 Lane English  
 Richard Epstein  
 Richard and Nancy Esbenshade  
 Suzanne Farhat  
 Barbara and Henry Federal  
 Mr. and Mrs. George Fee  
 Dino Fekaris  
 Linda Feldman and Eric Grosse  
 Newell Flather  
 Dorothy and Stanley Foster  
 Jennifer Fowler  
 Edward and Anne Franco  
 David and Ellen Freeman  
 Thomas and Joani Friedmann  
 Grace Fritzingler  
 Ann and Wayne Fujii  
 Daniel and Kate Funk  
 Ileana Futter  
 Kirsten Gardner  
 Joan and Peter Gates  
 Christina Genest and  
 David Kearns  
 David Gestrich  
 John and Nancy Ghertner  
 Penny Gildea  
 Marcia and Tertuliano Giraldo  
 Shirley Glasser  
 Susan and Harvey Gleeksman  
 Charles and Marjorie Gliozzo  
 Joel Gluck

Lynda Godkin  
 Mary and Robert Gold  
 Nancy and William Goldcamp  
 Danielle Goldstone  
 Melinda and Donald Goodick  
 Bunny and Tony Goodwin  
 William Gordon  
 William Gorham and  
 Joanne McGee  
 Craig Gorton  
 Maribeth Graham  
 Kent and Lynelle Gramm  
 Donald and Karyl Grant  
 Chris Greene and  
 Deborah Kahn-Greene  
 Earl Greer  
 Anthony and Carolee Grillo  
 Shirley and Henry Grimm  
 David and Jane Grinwis  
 Beth Hagmann  
 Meredith and Bruce Halen  
 Robert Hall and Jacqueline Goggin  
 Lucinda Halstead  
 Charlotte Hamlin  
 Eleanor Hamric  
 Jane Hanahan  
 Frances and Peter Handler  
 Laurie Hanley  
 Mark and Bonnie Hanson  
 John and Renata Harbison  
 Ellen and Charles Harley  
 Phyllis and Charles Hartt  
 Joseph Haskins  
 Robertson Hatch  
 Bruce Hauptman  
 Heidi and Wyatt Heard  
 Sally Heath  
 Robyn Hedly  
 Frederick Heitkamp  
 Mary and Harry Heltsley  
 Edith and George Henderson  
 Kevin Hennessey and Eileen Ryan  
 Randolph and Genie Herron  
 Mary Heyden  
 Joan Higbee  
 Stewart and Leota Hill  
 Linda Hill  
 William Hill  
 Susan and Don Hillock  
 Norman and Ruth Hinerfeld  
 Mary and Henry Hodges  
 Beryl Hogshead  
 Melvin and Phyllis Holson  
 Herbert and JoAnne Hoover  
 Karen Horan-Silva and  
 Eduardo Silva  
 Kenneth and Lorraine Hornstein  
 Suzanne and Leonard Horowitz  
 Maxine Houck  
 Tene Howard  
 Richard and Mary Howe



Barry and Mary Howe  
 Daniel and Kathryn Howell  
 Ruth Howell  
 Bophany Huot  
 Jill and Joel Hurwitz  
 Mary and Eric Hyson  
 Cary Irons  
 Martha Istvan  
 Sonja and Arso Ivanovich  
 Jonah and Linda Jacob  
 Thomas Jahns and  
 Margaret Orcutt  
 Edward and Claude Janeway  
 Phyllis Jansen  
 Susann Jarvis  
 William and Christine Jaymes  
 Rosemary Jaytanie and Paul Young  
 Wendy and Douglas John  
 Bruce and Julie Johnson  
 Michelle Johnson  
 Jean Johnson  
 Esther and John Johnson  
 Leslie Johnson-Tatsuta and  
 Paul Tatsuta  
 Joan and Nolan Jones  
 Peter Joseph and  
 Terencia Leon-Joseph  
 Elisabeth and Thomas Judson  
 Karen Kale  
 Sona Kalousdian and Ira Lawrence  
 Phyllis and Edward Kaplan  
 Melinda Kassen  
 Nadine and Takashi Kato  
 Julie Kaufman  
 Curtis and Monique Kaufman  
 Andrea Kavanaugh  
 David and Peggy Kehe  
 Kevin Kehoe  
 Barbara Keller and Steven Cohen  
 Susan and Wallace Kendall  
 Matthew and Janet Kenna  
 Nancy and Robert Kimball  
 Sarah and Richard Kimball  
 Lisa and Peter King

Nathaniel Kirkland  
 Frances Kleeman  
 Irene Kleinsinger  
 Sally Knapp  
 Barbara Knapp  
 Anne Knezevic  
 Lucy Kostelanetz  
 Valerie Krall and Ralph Lieberman  
 Gilda Kramer  
 Germaine and Thomas Krase  
 Naomi Kritzer and Edward Burke  
 Domenica and Thomas Kuech  
 Robert and Sherrell Kuhbach  
 Peter and Mary Lamb  
 Diane Lambert  
 Nancy Landau  
 Caroline and John Langan  
 Nancy Langfeld and Lee Waaks  
 Richard and Margot Lansing  
 Robert and Anne-Marie Lareau  
 Robert Laubach  
 Virginia Lawrence  
 Louis and Katherine Lawson  
 Jerome and Estelle LeBowitz  
 Teresa Lehr  
 Caroline Leising and  
 David Wolcott  
 Leonard and Lorraine Lerner  
 Edward and Marjorie Levin  
 Suzanne and Alan Levy  
 Anne LeWarne and  
 Mike Messinger  
 Mimi and Richard Lewellen  
 John and Alma Liebman  
 Elaine and Ward Lindenmayer  
 Laraine Lippe  
 Kathryn Liss  
 Jane and Howard Little  
 Laurie Livingston  
 Eleanor Logan  
 Maris and Jerry Long  
 Susan and Norman Loomer  
 Aaron Looney  
 Rev. and Mrs. Lowery

Gail Ludvigson  
 Christina Luedke  
 James and Ann Lundeen  
 Virginia Luster  
 Anne Lutz  
 Eleanor and Edward MacDowell  
 Deborah and Robert Macomber  
 Alice and Stephen Maechtlen  
 Steven Malamud  
 Gerald and Sydney Malick  
 Suresh Manchanda  
 Edward Marmon and  
 Phoebe Tucker  
 Fran and Steve Martin  
 Peter and Kathleen Martin  
 Lawrence Martin and  
 Angela Martin-Fehr  
 Sarah and James Martineau  
 Andrew and Jo-Ann Martyn  
 Patricia and Wayne Marzolf  
 Pamela Mauldin  
 Susan and William Maxwell  
 Peter May  
 Mary and Gay Mayer  
 Richard and Harriet Mayer  
 Donna McBride  
 Harrison McCann  
 Joyce McCarthy  
 Mary and Donald McClelland  
 Nancy and Robert McClusky  
 Sharon and Duane McCormick  
 Lucile and John McIntosh  
 Christina and Jerry McIntyre  
 Mary and Robert McQuiston  
 Sally and John Meagher  
 Jim and Cindy Meier  
 Viola Merchant  
 Lisa Merton and Alan Dater  
 Karl Mertz and Sarah Roeske  
 Danielle Meshorer  
 Helon Metz  
 Ann Meyer  
 Peter Michelson and Lisa Wood  
 Martin Mikulski  
 Edward Miller and Carol Kangas  
 Barbara and Ira Miller  
 Patton and Joyce Milligan  
 Sherry and Michael Mills  
 Ty Mitchell  
 Eberhard and Hannelore Moebius  
 Roger and Pauline Mohr  
 William Monning and  
 Dana Kent-Monning  
 Nancy Moore  
 Mary and Paul Moore  
 Mary and Allen Moore  
 Jane Moore  
 Pedro and Sara Morales  
 Caitlin Morgan  
 Katherine and David Morris  
 Mary Morse and James McBride

Roberto Mugnani  
 Mita Mukherjee  
 Kingsley Murphy  
 Margaret Murtha  
 Pamela Murton  
 Ann and Lyle Neeb  
 Beth and Arthur Nelkin  
 Emily Nelson  
 Harold Nomer  
 Eleanor and Robert November  
 Sally and Peter Oberbeck  
 Kathleen O'Donoghue  
 Jesse Okie  
 Adele and Norman Oppenheim  
 Paul Overby and Patricia Sprague  
 Kenneth and Joan Overman  
 Jennifer Palmer  
 Antonella and Anthony Panicia  
 Ann Parks  
 David and Bonnie Parsons  
 Kathryn and Peter Patrikis  
 Daniel Paul  
 Corrine and Shep Pawling  
 Thomas Pearce  
 Marjorie Pearson  
 Susan Peck  
 Elizabeth and Stephen Peck  
 James and Sara Pelgrift  
 Faith Pepe  
 Jerome and Marva Perrin  
 Laurie and W. Perry  
 Karen Peter  
 Martha Peterson  
 Deirdre and Matthew Pharr  
 Francis Phillips  
 William and Elizabeth Pierce  
 Constance Pious  
 Charles and Katherine Piven  
 Warren Plath  
 David and Barbara Plimpton  
 Theodore and Joan Podkul  
 Lorna Porras-Johnson and  
 Pierrepoint Johnson  
 Barry and Jackie Posner  
 Robert and Jeanne Potash  
 Walter Proper  
 Gretchen and Vincent Quinn  
 Miguel Quinones  
 Margaret Randol  
 Margaret Range  
 Phyllis Rappeport  
 Ellen Rapsher  
 Ellen Rathbun-Delocis  
 Mark Rebstock and Keith Kuhn  
 Andrew Reicher  
 Ala Reid  
 Stephen Reid  
 Christopher and  
 Pornpimol Reznich  
 David and Ann Rhineland  
 Carla Rich



Photo: Gerald Maa / China

Charles and Nancy Richardson  
 Kendra Rickerby  
 John and JoAnn Rider  
 Anne and Philip Rieger  
 Thomas and Leslie Ries  
 William and Ray Riess  
 Allan and Susan Riggs  
 Carroll and Jane Rikert  
 Robert Roberts  
 Randall and Patricia Robertson  
 Ramona Robinson  
 Mary Robinson and  
 Thomas Simmons  
 Deborah Robinson  
 Peter and Jane Roda  
 Patricia Roesch  
 Amy Rome  
 Wilma Ronco  
 Joan and Stanley Root  
 Martin and Carol Rosenblum  
 Jane Rostov  
 Robert and Karolka Rottenberg  
 Peter and Jane Roy  
 Robert and Jana Rudnick  
 Martin Rudow and Nancy Ehrlich  
 Marsha and Roger Runningen  
 Susan and Daniel Ruuska  
 Loretta Ryder  
 William and Laura Salganik  
 Mr. and Mrs. Fred Salter  
 Nancy Salz and Richard Mickey  
 Betsy and James Sampliner  
 Eileen and I. Samuels  
 Helen Samuels and Greg Anderson  
 Thomas Santos  
 Colleen Scanlan Lyons  
 Joe Schapiro  
 Mary Schley  
 Robert and Sheila Schloss  
 William Schlutow  
 Mary and William Schmidt  
 Beverly and Roald Schopp  
 Linda Schrank  
 Susan Schwartz  
 Susan and Thomas Scott  
 Kandis Scott  
 Leslie Scott  
 Terri and Anthony Scribner  
 Mary Scully  
 Erika Seid  
 Sara Seiden  
 Elaine Seiler  
 Barbara and Roger Sevy  
 Heather Shaner  
 Carole Sharoff  
 Ruth and Raymond Shepherd  
 James Sherrill and Kelly McGrath  
 Todd Shetterly  
 Debbie and Gregory Shields  
 Letitia and Walton Shields  
 David and Peggy Shiffrin  
 Terrance and Susan Shook  
 Bobette and Byron Siegel  
 Amit and Carla Sikdar  
 Mr. and Mrs Silverberg  
 Mary Simonds  
 Shannon Simrell  
 Jeffrey Singal  
 Steven Sjoberg  
 Elizabeth Sluder  
 Marjorie and Richard Smallwood  
 Claudia and Damon Smith  
 Margaret and Glen Smith  
 Elaine Smith  
 Joyce and Ashby Smith  
 Diane Smook and Robert Peduzzi  
 Alice Smyth  
 Margaret Snowdon  
 Kathleen Snyder  
 Anne Snyder  
 Linda Somerville  
 Margaret and James Sparks  
 Elizabeth Sparks  
 Reed and Paulene Sparling  
 Marilyn and Louis Spaventa  
 Ulrich Stadler  
 Lois and George Stahl  
 Allan and Nancy Stark

INDIVIDUAL DONORS

Timothy Steele and Inge LaCour  
 Sally and Bernard Stein  
 Nancy and Robert Steinberger  
 Roberta Steiner  
 Richard and Paula Stephens  
 Danielle Stillman  
 Richard Streat  
 Robert and Liza Streett  
 Eric Strickland  
 Genevieve and Russell Stryker  
 Mary Stuart  
 Kathryn and Robert Sucher  
 Richard and Susan Sukov  
 Elizabeth Sussman and I. Joseph  
 Seth and Frances Taft  
 Sylvia and Karl Talarico  
 Lynn Talbot  
 Jane and William Taubman  
 Jacqueline Tear and Alan Jones  
 Sue and Richard Tempero  
 Timothy Temple  
 Nia Terry  
 Letty and Bruce Thall  
 Randolph and Barbara Thomas  
 Jennifer Thomas  
 Martin Tillman and  
 Gail Hochhauser  
 Paul Tobias  
 Barbara Tobin  
 Thomas Tolbert  
 Susan Tolstrup  
 Jane Torrens and W. James  
 Elizabeth Tracey  
 Barbara Tully  
 John and Dorise Tuthill  
 Jay Twomey  
 Kirk Uejio  
 Yvonne Van Cort and  
 Roy Solomon  
 Patricia and H. van der Schoor  
 Katherine Van Hoesen  
 James Varley  
 Gay Vervae  
 Carlos and Karen Villarreal

Jean and William Vitalis  
 Francis and Ellen Voigt  
 Catherine and Curtis Vouwie  
 Walter and Martha Vredevel  
 Marvin and Adeline Wachman  
 Paul and Mary Waldman  
 Sherwood Waldron  
 Patricia Walker  
 Ann Walker-King  
 Elizabeth and John Walters  
 Ruth Ward  
 Astrid Warden  
 Lisbeth Warren  
 Kimberly Warren  
 Lola Washington  
 Susan Wasserman  
 Janice Waters  
 Susan and Seward Weber  
 Lydia Wegman and  
 Robert Cantwell  
 Mary Weidlein  
 Richard Weinberg and  
 Christine Miller  
 Doris Weinberg  
 Anita and E. Weinstein  
 Beth Weisberg and Martin Greene  
 Elizabeth and Derek Westen  
 Anne Westmoreland  
 Anne Wheeler  
 Andrew Wheeler  
 William and Betty Whipple  
 Sammis White  
 Louise White  
 Elizabeth and Baur Whittlesey  
 Mary and Joseph WIELLETTE  
 Jane Wilber  
 Oliver and Pauline Wilder  
 Sara Jean and Clarke Wilhelm  
 Gordon Wilkins  
 Sally Wilkins  
 Wade Wilkins  
 Cynthia Williams  
 Charles Williams  
 Kidgie Williams

Susan Willson and Rory Hayden  
 Sandra Wilmore  
 Holly Wilson  
 Lynette Wilz  
 Barbara Wing  
 Scott Wiskoski  
 William and Joan Witkin  
 Molly and William Woehrlin  
 Albert and Barbara Wolcott  
 Abraham and Margaret Wong  
 Abe and Margie Wong  
 Mary and Jesse Wood  
 Elizabeth Woodin  
 Richard Wooten  
 Julia Worker  
 Lorraine Wright  
 Peter Wright and Reid Melton  
 Myra and Charles Wrubel  
 Cathy Yandell and Mark McNeil  
 Yvonne Zaro  
 Susan and Yorgos Zazas  
 Paul Zucker

Martha Auld  
 Alice Austin  
 Judy Baer  
 Terence and Mimi Baer  
 Lucy Baird  
 Leesa Baker  
 Ronnie Ballenger  
 Pamela Banks  
 Sarah Barlow  
 Carol Barnett and John Tartaglia  
 Madeline and Richard Baron  
 Edward Baron and Marcia Haag  
 Janice Barrett-Chow and  
 Milton Chow  
 Thomas and Michele Bartlow  
 Cynthia Bates and Gary Wolberg  
 Jocelyn and Wilhelm Baumgarten  
 Myron and Esther Beal  
 Kenneth and Linda Becker  
 Gail and Peter Beckett  
 Deborah Beers-Jones  
 William and Penelope Behrens  
 Christina Bell  
 Emily Bennison  
 Russell Benson  
 Edward Bent  
 Nancy and Mark Benz  
 Hillary and Priscilla Bercovici  
 Kurt Berendt  
 Jason Berger  
 Leatrice Berman-Sandler and  
 Stephen Sandler  
 Dorothy and Steven Bernholz  
 Anne and David Bernstein  
 Judith Berson  
 Lyndsey Beutin  
 Martha and Ernest Bial  
 Gail Bickford  
 Mary Ellen Biggs and  
 Michael Robinson  
 William Bird  
 Janis and Hugh Birdsall  
 Dean and Agnes Bishop  
 Philip Bitters  
 Judith Bjorck  
 David and Ruth Blackburn  
 Barbara and Alan Blackburn  
 Rachel Blain and Andrew Chase  
 Elsa Bley  
 Gary Bloom  
 Emily Blumberg and  
 John Mezocho  
 Jonathan Bobb  
 Louise and William Boehm  
 George Boggs  
 William Bollwerk  
 Lisa and Whitford Bond  
 Patricia and Charles Booth  
 Virginia Borkenhagen  
 Linda Borreson

SUPPORTERS

Ethel Abbott  
 Jonnet and Peter Abeles  
 Deborah and Robert Abilock  
 Miriam Abrams  
 Susan and Robert Adams  
 Pauline Adams  
 Allan Adams  
 Gail and Kenneth Albert  
 Thalia Alberts  
 Sally Aldrich  
 J. and Marcia Aldridge  
 Marcy Alexander  
 Robert and Z. Allen  
 Muriel and Paul Almquist  
 Elisabeth Altman  
 John and Ana Amaral  
 Mohamed and Devika Ameer  
 Arland and Sharon Amidon  
 Karlina Anderson  
 Lide and William Anderson  
 Janet and Kenneth Anderson  
 Elise Andre  
 Jeanne Angier  
 Holger and Lisbeth Appel  
 Eleanor Appel  
 Nancy Aragon  
 Daniel and Cecilia Arellano  
 Judith Armold  
 Francine Armstrong  
 Stephen and Jeanne Armstrong  
 Harold and Tara Arnold  
 Betsy and Ben Asen  
 Abbey Asher and Erik Shapiro  
 Denise Attwood  
 Constance Atwell  
 Claire Aubourg

Photo: Juliane Ivany / Kenya



Photo: Suzanne Moellendorf / Ecuador



Donald Bouchard and  
Jane Andrews  
Karen Bove  
Kathleen Bowes  
Edmund Boyd  
Ronnie Bramesco  
Irene Brammertz  
Judy Brewer  
Jerry Bright  
Eleanor and Gordon Brockway  
Patricia Brogdon-Gomez and  
Fernando Gomez-Frutos  
Susan Brokaw and Charles Wright  
Mary Broshek  
Alan and Judith Brotherton  
Amy Brotschul  
Phil and Marla Brown  
Betty Brown  
Catherine and Stuart Brown  
Elizabeth and D. Douglas Brown  
Karen Brown  
Frank and Delores Bruni  
Edith and Thomas Buchanan  
Katherine and James Bulkley  
Barbara and Wilbur Bull  
Rachel and Douglas Burbank  
Judy and Tom Burich  
Julia Burns  
Geoffrey and Donna Burr  
Andy and Elise Burrows  
Kristina and Kenneth Burton  
Dorothy Bushey  
Julia and Walter Busse  
Judith and Kent Busse  
Tara Cahn  
Margot and Michael Calandrino  
Bob and Joanne Caldwell  
Peter Calfee  
James and Sara Call  
David and Margaret Camp  
Hannah Campbell  
Martha and Brad Campbell  
Phoebe Caner  
Brenda Carey

Salvatore and Ardea Carfagno  
Laren and Stephen Carkin  
Lucinda Carlson  
Betty Carman  
Gail and William Carns  
Claire and Richard Carpenter  
Martin Carrier  
Macauley and Jane Carter  
Heidi Casale  
Linda and Thomas Castano  
Nancy and Fred Caswell  
Rebecca Cathcart  
Emile and Doe Chagnon  
Loch Chandler  
Kari Charlson  
Judith Chase  
Helen Chase  
Margo Chavez-Charles  
Susan and Robert Checchi  
Patricia Chipps  
Sarah Chipps  
Girard Christmas  
Karl Chun and Jane Neumann  
Sarah Church  
Judy and Edward Cincinnati  
Joan Clampitt  
Daniel Clapper  
Rowland and Gwendolyn Clark  
James and Susan Clark  
Wendy and William Clarke  
Daniel Claster  
Robert Cline  
Elizabeth Clinton  
Susan and Jonathan Cohen  
Paula Cohen  
Duncan Cohen  
Blair and Vincent Colagiuri  
Janet Cole  
C. and James Coleman  
Julia Collins  
Milagros Colon  
Susan Colville-Hall and  
Stephen Hall  
Jeanette and William Colwell

Barbara and Michael Conheim  
Carol and Louis Contiguglia  
Roberta Cook  
Helen Corchado  
Susan and Charles Corcoran  
Lynn and Thomas Cordy  
Anne Corley  
Jose Cornieles  
Beverly Coughlin  
Sandra Cowan  
Carol and Robert Crafts  
Diana Crane  
Emma Crannell  
Shirley Crosier  
Carlene Cross  
Lora and Harry Crouss  
Joan and Richard Crum  
Michael Curran  
Kathryn Curtin  
James and Diana Cusser  
Dawn Dagleish  
Judith and Lacy Daniel  
Judith Dannehy  
Catherine and William D'Anza  
Barbara Davis  
Anne Davis  
Gracelyn Davis  
Shirley and David Dayton  
Barbara and Rodney Dean  
Richard Deane  
Maura Deedy  
Mary DeGozzaldi  
Janet and Robert Delaney  
Kate Demong  
Donna Dempster-McClain and  
John McClain  
Mary and Steven Dennison  
Donn and Judith Denniston  
Rita Des Armier  
Grace Desmarais  
Laura and James Despard  
Brian Dettelbach  
Anne Detwiler  
Lisa Dewitt  
Michela Di Duro  
Ruth and David Dietz  
Joyce Divoll  
Stephen and Nancy Dock  
Susan Dodge and Jeff Whittaker  
William Dodge  
Milan Doering  
Jessica Doerr  
Carol and Ira Don  
William Donahue and  
Dana Densmore  
Robert Doriss and Jean Bonnet  
Julie and Stanley Douglas  
Paul Douglass  
Rita and Joseph Doussard  
Kathryn Dovgala and John Carr  
Roberta and William Dowling

Emily and Ben Drew  
Margaret Drucker  
Cameron Dubie  
Karen Dudas  
Elizabeth and Richard Dudley  
Joseph Duggan  
Richard and Lois Dunham  
Greg and Nancy Durgin  
Lelah Dushkin  
Leah and David Edgerton  
Joyce Edmond  
Robert Edwards  
Elizabeth Edwards  
Stephanie and Peter Eglinton  
Peter and Joan Eilbott  
Winthrop Eldredge  
David and Marie Elias  
Susan Elkins and Jack Winerock  
Betty Ellerbee  
King and Mary Embry  
Darcy Emery  
John and Diana Engel  
Rebecca English  
Ron Ennis and Lesley Cox  
Anne Eppig  
Wayne Erickson  
Kathryn Erskine  
Corrine and Kenneth Ervin  
Marissa Espineli  
Kent and Julia Estabrook  
Walter and Anita Eth  
Richard and  
Elizabeth Ettinghausen  
Laura and Jordan Evans  
Lucy and Craig Evans  
Marie and Eric Evitt  
Christie Fairchild and  
Arthur Olson  
Peter Falion and  
Elizabeth Tannenbaum  
Mary and William Falion  
Esther Falk  
Barbara Fant  
Alfred Farrell  
Gwendolyn Fassett and  
Kevin Mahony  
Daniel and Barbara Fawcett  
Olivia Feagins  
Kay Feichter-Thistlethwaite  
Carol Feige  
Melissa Feld  
Nora Femenia  
Saul Fern  
Mark and Beth Fernald  
Margaret and Rafael Fernandez  
Thisbe Fields  
Rita and Gene Fink  
Ann and Gary Fink  
Sharon Finnegan-Price  
Eve and Thomas Firor  
Robert and Nancy Fischlein

INDIVIDUAL DONORS

Diane and Walter Fisher  
 Nancy Fitzgibbons  
 Emily FitzRandolph and  
 Ronald Wiedenhoef  
 Rice Flanders  
 Katherine Flynn  
 Anne and Ian Forbes  
 Robert and Terry Fortner  
 Linda and Richard Foster  
 Marion Franck  
 Aaron and Sora Frankel  
 Helen and Ben Franklin  
 Christian and Melissa Frantz  
 James and Norma Frederick  
 Becky Frederick  
 Thomas French  
 Gilman and Donna Friend  
 Lynn Friend  
 Edwin Friendly  
 Chester Fritz  
 Enso Frosini  
 Linda Fuerst  
 Margaret Fulenwider  
 Marilyn and John Funk  
 Marian and Kenneth Furst  
 Ann and Howard Garner  
 James and Catherine Garnett  
 Harold Garrett-Goodyear  
 Cori Garrett-Goodyear  
 Jerry Geier  
 Anne and William Geller  
 Judith Gentry  
 Charles Gibson  
 Sally and Herbert Gibson  
 Lowell and Ardis Gillett  
 Linda and Zaven Giragosian  
 Helen and Emmanuel Gitlin  
 Nada Glick  
 Rachel Glickman  
 Karen Goddard  
 Richard and Sharon Godden  
 Roger and Stephanie Goldman  
 Ana Gomez-Garcia  
 Glenn and Nancy Goodale

Thomas Goslin and  
 Julia Cox Goslin  
 Jennifer Gould  
 Nancy and Michael Goyda  
 Edward and Carmen Gracia  
 Jasmina Gradistanac  
 Linda and Robert Grambau  
 Peter and Deborah Granger  
 Julia Gray  
 Frederick Gray  
 Stuart and Susan Green  
 Caroline Green  
 Gillissen Green and Peter Twichell  
 Ayana Green  
 Ralph Green and Amy Totenberg  
 Doris and Leon Greenberg  
 Catherine Greene  
 Stephen and Vibeke Gregory  
 Clementine Gregory  
 Judith Grodin  
 Jane and James Grossman  
 Richard Gruberg  
 Robert and Marilyn Grumbach  
 Helene Guarnaccia  
 David and Susan Guernsey  
 Charles and Sandra Hackbarth  
 Michelle and Salem Hadj Salem  
 Marcus and Marjorie Hadley  
 Yvonne and Carter Haff  
 Miriam Hall  
 Stanford and Jacquelyn Hall  
 Barbara Hall  
 Dale and Patricia Hall  
 Sylvia and Ralph Hallberg  
 Nancy and Martin Halpern  
 Martin Hamburger  
 David and Carol Hamilton  
 Persis Hamilton  
 Laurel Hanke  
 Elizabeth Hanna and Hank Olzak  
 Anne and David Hardy  
 Margaret Harmon  
 Mary and Frederic Harned  
 Ellen and Julian Harris

Stephen and Suzanne Harris  
 Lakeisha Harris  
 Joan Harrison  
 Deane and Mary-Ellen Harsha  
 Jo Anne and Karsten Hartel  
 Jennifer Hartshorn  
 Elizabeth Hastings and  
 Michael Orlando  
 Robin Havard  
 John and Judith Hawes  
 Byron and Deborah Haynes  
 John and Jan Hazard  
 Melinda and Paul Heady  
 Linda Heimerdinger and  
 William Faulkner  
 Megan Heister  
 Barbara and Edvard Hemmingsen  
 Hildamarie Hendricks  
 Lucinda and Richard Hepp  
 Amber Herndon  
 Godfrey Herndon  
 Julie Herr  
 Susan and Lee Hershenson  
 Nancy and Ewen Hill  
 Steve Hill  
 Paul Hillman  
 Elizabeth and Jonathan Hinebauch  
 Paula and H. Hodgdon  
 Jill Hodsdon  
 Joseph Hoff  
 Martha Hoffheimer  
 Pamela and Charles Hoffman  
 Richard Hoffman  
 Jerome and Norma Hoffman  
 Patricia Hogan  
 David and Martha Hogg  
 Cathryn Holinger  
 Robert Hollister  
 Ann Hollos  
 Stella and Edward Holmes  
 Paul and Kathryn Homer  
 Joanne Hooper  
 Donald and Helen Hoppe  
 Deborah Hopper  
 Sherryl and Christopher Horton  
 Edith Howard  
 Eleanor and Daniel Howe  
 Pamela and Robert Howell  
 Catherine Howell  
 Lise Hubbe  
 Janet Huchingson  
 Carswell and Cynthia Hughs  
 Janet Hulnick  
 Marcia Hulsbrink  
 Elaine Hultengren and  
 Timothy Buckley  
 Patrick and Sandra Hurley  
 Karen and Michael Hyland  
 James and Maureen Ingham  
 John and Donna Izzo  
 Priscilla and Anthony Jackett

George and Blair Jackson  
 Gordon and Kristine Jackson  
 Deborah and James Jaeger  
 Jill Janeczko  
 Anne Janeway  
 Margo and Sherman Janke  
 Henry Janoski  
 Presume Jean-Baptiste  
 Virginia and Thomas Jensen  
 Albert and Lucille Jerard  
 Stephen Jett and Lisa Roberts-Jett  
 Robert and Lorna Jimerson  
 Bill and Cindy Jirkovsky  
 Jane and William Johnson  
 Carolyn and Robert Johnson  
 Ellen Johnson  
 Patricia and Andrew Johnson  
 Malcolm and Janet Johnson  
 Rachel Jolly  
 Barbara and Davis Jones  
 Stephen Joseph  
 Michael Joseph  
 Jeryl Julian  
 Jay and Kathy Kacena  
 Ellen and Jerrold Kahan  
 Steven and Elana Kamenir  
 Kenneth Karem  
 Donald and Ruth Katzner  
 Eunice Kaymen  
 Nancy and Donald Keefauver  
 Jennifer and Neil Kelly  
 Maureen Kelly  
 Franklin Kelton  
 Amalie Kempton  
 Peter Kenny  
 Dale Key and Aida Justiniano  
 Diane Kibbe  
 Wilmot and Julie Kidd  
 Ann Kiggen  
 Mary Kimbrough  
 Lance King and Virginia Stearns  
 Robert King  
 Kenneth King  
 Patricia and Richard Kirchoffer  
 Bev Kluth  
 Beth and Roger Knight  
 Pamela and Gary Knowles  
 Kerry Koen  
 Nathan Kogan  
 Juliette Kopper  
 Gail Kostek  
 Sharon and James Koury  
 Elisabeth and Richard Krahenbuhl  
 Carol Kramberg-Walker and  
 Bruce Walker  
 Marlene Kramer  
 Suzanne Kranz  
 Mark and Regina Kraus  
 Helmut Kremling  
 Judith and David Kuehn  
 Gabrielle Kulin

Photo: Angela Smith / Ecuador



INDIVIDUAL DONORS

Lars Kulleseid  
 Cecilia Lacks  
 Aziel and Greta LaFave  
 Richard and Olive Lafer  
 Tony and Carlise Landis  
 Harvey Landress  
 Nancy Lankford  
 Diane Lansing  
 Dan and Kathryn Larose  
 Marianna Larsen  
 Barbara and John Larson  
 Deborah Lasday  
 Mary and Marshall Lasky  
 Dorothy and Vittorio Laudati  
 Joyce and Robert Laudise  
 Frances and Ralph Lauer  
 Robert Lawson and Cicely Carroll  
 Sarah Leavell  
 Renee and Liam Leduc Clarke  
 Jennifer Lee  
 Judith Lee  
 Geoffrey Leech  
 David and Irene Leichtman  
 Nanci Leitch and Brian Remer  
 Regina Leitner  
 Jeanmarie Levesque and  
 Bill Lockwood  
 Stephanie Levin  
 Solomon and Elizabeth Levine  
 Thomas Lewellen  
 Lisa and Dennis Lewis  
 William and Patricia Lewis  
 Bou Lim  
 Gary Lind and Ellen Kelly-Lind  
 William and Suzanne Lindberg  
 Robert and Mary Linden  
 Harriet Lipowitz  
 Donna and Charles Loeffler  
 Richard Longacre  
 Jonathan Longcore  
 Tracy Lopata  
 Sylvia Lotspeich  
 Geraldine and Ted Lowery  
 Susan Lubell

David and Margaret Luce  
 Pamela and Dennis Lucey  
 Leila Ludy  
 Eileen Lukacs  
 Marianne Luken and  
 Robert Brown  
 Helen Lund  
 Patricia Lupo  
 George Lupone and Deborah Hahn  
 Hai Chau Ly  
 James Lynch  
 Heidi Lynn  
 Angus Macbeth  
 Christine MacCormack  
 Gwendolyn Mack  
 Nancy and Stephen Madden  
 Elizabeth and Fred Mahaffey  
 David and Andrea Maille  
 Albert Mailman and  
 Patricia O'Sullivan  
 Lincoln Malik  
 Charles Malu  
 Judith and Donald Mark  
 Andrew and Marla Martyn  
 Linda and Jeffrey Mates  
 Carol and John Mathis  
 Parker and Pauline Mathusa  
 Andrew Mattox  
 Ted and Naomi Mayer  
 Kevin and Christine McAvoy  
 Dee McClurg  
 Michael and Laura McCormick  
 Linda McCready  
 Elizabeth and John McDonald  
 David and Kathleen McDonald  
 Judith McDonough  
 John and Dorothy McFadyen  
 Carol and David McFarland  
 Jean and Allen McFarren  
 Kathleen McGoey  
 Jami-Rae McGovern  
 Nancy McGreevy  
 Robert and Elizabeth McGregor  
 Ellen and Thomas McKoy

Wallace and Evelyn McLean  
 Sara McManigal-Domonoske and  
 Dan Domonoske  
 Camille Meade  
 Saskia Meckman  
 Marsha Meegan  
 Jennifer Meese  
 John Mehegan  
 Ira and Ruth Meislin  
 Jack and Micaela Mendelsohn  
 Edward Menninger and Ann Hunt  
 Meryl and Konthath Menon  
 Susan Menzies  
 Nancy and Edwin Merrill  
 Susan and Ray Messenger  
 Carolyn and Eugene Metcalf  
 Virginia and John Middleton  
 Michael Miketta  
 Anne Miketta  
 Nancy and Franklin Miles  
 Edith and Mark Millar  
 Michele Miller-Hansen  
 Haley Mills  
 Michael and Rachel Mintzer  
 Christopher and Pamela Mitchell  
 Sistie Moffitt  
 Bridget Monohan  
 Kimberly Mooney  
 Marcia and Charles Moore  
 Elizabeth Moore  
 Sarah Moore-Seidel and  
 George Seidel  
 Chula and Hubert Morel-Seytoux  
 Cynthia Morris  
 Audre and Joseph Morrison  
 Linda and David Morrow  
 Joyce Morse  
 Nancy and William Morse  
 Sarah Mowitt  
 Pamela and William Mueller  
 Vincent Mugisha  
 Neil and Dola Muhonen  
 Lee and Kevin Munnich  
 Jennifer and Ronald Munoz  
 Jerry and Joyce Murley  
 Eunice Murphy  
 Barbara and Gerald Murphy  
 Karen Murray  
 Susan and Thomas Murray  
 Victor and Virginia Muzquiz  
 Alexander Nading  
 Virginia and Robert Nagy  
 Natalie Naylor  
 Elizabeth and Nial Neger  
 Danna and Andrew Nehrbus  
 Rudolph and Shirley Nelson  
 Ethel Nesson  
 Carl Neuendorffer  
 Peter Neumann  
 Cathy and Daniel Neuspiel  
 Sandra and Steve Newcom

Thomas and Carol Newcombe  
 Linda and Richard Newman  
 Dan and Hang Nguyen  
 Kenneth Nicolay  
 Margaret Nordgren  
 Sally and James Norton  
 William Nusbaum  
 Susan O'Donnell  
 Kristen Ohlson  
 Paola Olaiz  
 Dolores Olson  
 Thekla Olson  
 Kirsten O'Malley-Keyes  
 Ann Lee Omond  
 Fe Ong  
 Karen Orman  
 Dorothy O'Ryan  
 Mary and James Osborn  
 Joanne O'Sullivan and  
 Andrew Goldberg  
 Lori Ott  
 Patricia Owen  
 Frances and Gilbert Owren  
 Rhoda Padow  
 Helen and Joseph Page  
 Lindy and Richard Palfreyman  
 Susan Papp  
 Bruce and Mary Pappas  
 James Parker  
 Hasumati and Solomon Parmar  
 Juliet Parry  
 Diane Parton and Eugene Crawford  
 Lawrence and Jan Pass  
 Louise and Belden Paulson  
 John and Lydia Peale  
 Sally Pennell  
 Genevieve Pennington  
 Katie Pepler  
 Justin Perkins  
 John and Jennifer Perry  
 Helene and Edward Pesin  
 Timothy and Patricia Peterson  
 Arlayne and Thomas Peterson  
 Holly Peterson  
 Jill Petraglia  
 Sarah Phillips  
 Nancy Phillips  
 CamVan Phu  
 Joseph and Carolyn Pieciak  
 Tucker Pierson  
 Diane Pike  
 Fred and Marjorie Piker  
 Darrell Pinckney  
 Larry Pistell  
 Joseph and Ellen Pittenger  
 Benjamin Plimpton  
 Edward and Susan Post  
 Judith Preston  
 Patricia Prieto and Thomas Werley  
 Katharine Prisby  
 Robert and Sen Pen Pu



Photo: Karen Woodward / Kenya

INDIVIDUAL DONORS

Lois Purdham-Kidane and Solon Kidane  
 William Putman  
 Peter Quamo  
 Jean Quinn and Craig Rustici  
 Janet Raban  
 Jean and Lauren Rachlin  
 Anita and Morton Rainish  
 Jessica Ratey  
 Roberta Rayno  
 Wendy Redlinger  
 Vanessa Reed  
 Mildred and Clarence Reeves  
 Sharon Regen-Wojnarowicz and Stanley Wojnarowicz  
 Richard and Pamela Reid  
 Michael Reidenbach  
 Peggy Reily and Mr. Kennedy  
 Leslie Reingold  
 Jason Reis  
 Patricia Reiter  
 Robyn Remeika  
 Laurie and Barbara Rennie  
 Nancy Reuschel and David Atwood  
 Gail Reynolds  
 Cammy Richelli  
 Roland and Janice Richmond  
 Phyllis Richmond  
 Barbara Riley  
 Bruce Rindler and Nancy Mullin-Rindler  
 Leonard and Elizabeth Ringstad  
 Sandra Rintoul  
 Thomas Rippstein and Maria Cinos-Rippstein  
 Celia Ritchie  
 Anne Ritter  
 Tanya and Gino Rivera  
 Helen Rivlin  
 Eileen Rizo-Patron  
 Richard Roberts and Vonya McCann  
 Charles Roberts  
 Joan Robinson and Patricia Pendl  
 Lillie Rodgers  
 Pedro and Judith Rodriguez  
 Judy and Jose Roeset  
 Barbara and John Rogers  
 Mary and Paul Roloff  
 Deborah Rose  
 Peter and Marian Rose  
 Berenice Rosenfeld  
 Andrew and Maria Rosenfield  
 Abby Rothschild  
 Benjamin and Sally Rowles  
 Mary Rubel  
 Gretchen and Lewis Rubenstein  
 Jeremy and Linda Rubenstein  
 Howard and Judith Rubenstein  
 Joshua Rubin  
 Roger and Kristine Ruckert

Ronald and Deborah Rudowsky  
 George Runge  
 Linda and Sam Saltonstall  
 Sara Sangdahl  
 Paul Santos  
 Saraellen and Thomas Sargent  
 Tara Sartorius  
 John Sauer  
 Carol Schaffer  
 Nancy Schaffman  
 Joan and Bernd Schatz  
 Joshua Schiffer  
 Elizabeth Schiffman  
 Stephanie Schlotterback  
 James and Jeannette Schmidt  
 Patricia Schmidt  
 Michael and Jane Schmitz  
 Mary Schmitz  
 Patricia Schneider and Roger Smith  
 Mary and Conrad Schuck  
 Leslie and Lee Schulman  
 William and Susan Schultz  
 Mark and Karen Schulz  
 Deborah Schulze  
 Leisha and Karsten Schutt  
 Marilyn and Joseph Schwartz  
 Joan Scott  
 Georgia Seamans  
 Kerry and Jonathan Secrest  
 Alison Segal  
 Marshall and Terrie Sellers  
 Fred and Melanie Semko  
 Kareth and Jeffrey Servis  
 Jessica and Paul Servis  
 Janet Severance  
 Libby and Daniel Shanefield  
 Bradley and Susan Shaw  
 Frank and Ruth Shaw  
 Roberta and Frederick Shaw  
 John and Maureen Sheehan  
 Marywinne Sherwood  
 Mr. and Mrs. John Shields  
 Lynnette and Harvey Shields  
 Jennifer Shilling  
 Sharla Shipley  
 Andrew and Lois Siegel  
 Roger and Marcia Simon  
 Stacey Simon  
 Elizabeth Simon  
 Katherine and Robert Simpson  
 Margot Sklar  
 Joyce Slack  
 Joan and Jeffrey Slottow  
 Constance Smith  
 Margaret Smith  
 Jeff Smith and Susan Ward-Smith  
 Martha Smith  
 Janice Smith  
 Oné Smith  
 Lewis and Priscilla Smith  
 Ellen Smith and Howard Alpert



Photo: Gretchen Brinson / India

Nancy Smoyer  
 Daina Smuidrins  
 Bruce and Gayle Snyder  
 Elizabeth and Bertram Snyder  
 Joyce and Richard Solo  
 Matthew Solomon  
 Mimi Sommer  
 Janet and Robert Sommerville  
 Caroline and Michael Sorell  
 Carol and William Sours  
 Adrienne Southgate  
 Nancy Spacciapoli-Pereira and Antonio Pereira  
 Dorothy and John Spadafora  
 Elizabeth St. John  
 Michele and Victor St. Vincent  
 Robert and Helen Stafford  
 Lynn and Samuel Stahl  
 William and Susan Stason  
 Nancy Stegehuis  
 Norma and James Stehli  
 Mary-Ellen and David Stein  
 Margaret Steptoe and Alfred Spotts  
 Marcia Stevens  
 Rachel Stewart  
 Cynthia Stibolt  
 Frances and Nelson Stiles  
 Genevieve Stimmel  
 Deborah and Craig Stirling  
 Sally Stocking  
 Sarah Stokes  
 Irving Stolberg  
 Lisa and Stephen Stone  
 Amy Stone  
 Marion Stoner  
 David Strachan  
 Ceceile and David Strand  
 Lee and John Streett  
 Prudence and Edgar Stuhr  
 Richard and Beth Sturley  
 John Sturzenberger  
 Sara Suchman  
 Jack and Mary Sukov  
 Kathleen Sullivan  
 William and Sandra Sullivan  
 Mark Sundin  
 Charles Sutton  
 Sheila Swan  
 Nancy Swift  
 Elizabeth and James Swinson  
 Joan Tait  
 John and Susan Talbott  
 Peter and Carol Tannenwald  
 Catherine Tansey  
 Olivia and Charles Tarleton  
 James and Betsy Tarr  
 Andrew Taylor  
 Carl and Chin-Wen Taylor  
 Robert and Elizabeth Taylor  
 Nancy Temple  
 Ursula Tenny  
 David and Christina Tetrault  
 Mary Ann Thaler  
 Kurt and Melinda Thomas  
 Olga Thomas  
 Peter and Thelma Thompson  
 Alfrida Thompson  
 Melvin Thompson  
 Sally Thompson  
 Naomi Thornton  
 Kay and Charles Thurman  
 Anne Thursby  
 Samantha Timmons  
 Linda Tobin and Stephen Pepper  
 Leonard and Jean Tomat  
 David Topka  
 Steven and Heather Tower  
 Jill Tracey  
 Ann Trammell  
 Judith and David Tripp  
 Dominique Trouillot-Lavelanet  
 Lynne Tsubouchi  
 Janet and William Turner  
 Christie Turner  
 Anne Turtle  
 Wayne and Shirley Tustin  
 Jeffrey Unsicker  
 John and Anne Upton

Julianne Vance  
 Victoria and Donald Velsey  
 Patricia Verboom  
 Stephanie Vickers  
 Christopher von Rueden  
 Judith and Clellan Vore  
 George Waddell  
 Sara and David Walden  
 Charles Walker  
 Michael and Diana Walker  
 Marjorie and David Walker  
 Kirke Walker  
 Constance Wallin  
 Jerry and Ann Walls  
 Amy Walter  
 Beatrice Ward  
 David Ward and  
     Alice Greenwald Ward  
 Charles and Elizabeth Warner  
 Mary-Jo and Richard Warren  
 Edmund and Myrtle Watson  
 Kathy Watts  
 Marcia Wattson  
 Mary Waxse  
 Martha Webster  
 Abigail Weinberg  
 Linda Weiss  
 Frances Welch  
 Barbara and Leo Wesley  
 James and Susana Wheatcroft  
 Joan and Norman Wheeler  
 David Wheeler  
 Louise Whipple  
 Thomas and Mary White  
 Betsey and Carl Whitman  
 Elaine Wilcox  
 Julia Wilkerson  
 Lisa Williams-Ferreira

Marilyn and David Willis  
 Brenda Wilson  
 James and Joan Wilson  
 Barbara and Mason Wilson  
 Louise Wilson  
 Shelley Winchester  
 Eleanor Winslow  
 Sally Witnov  
 Charles and Lynda Witten  
 Susan Wolf  
 Allen Wolfert and Adrienne Young  
 Gregory and Mary Woolever  
 Ellen Wormser  
 Doris Wright  
 Brian Wright  
 Fred and Betty Yarbough  
 John and Mary Yates  
 Nancy and James Youngerman  
 Susan Zaluski  
 Kaoutar Zerouali  
 Doris Zettle  
 Joan and William Zimmer  
 Randal and Mary Zimmermann  
 Nancy and William Zinn  
 Nancy Zinner  
 Leslie Zucker

## Is your name missing or listed incorrectly?

If you think your name should have been included in this report, one of three things may have happened:

- 1. We made a mistake!** We are sorry if this is the case. Although we take great care in compiling our list of donors, there is always the chance that an error will occur. If we have accidentally omitted or misspelled your name or placed you in an incorrect giving club, contact the Development Office, Kipling Road, PO Box 676, Brattleboro, VT 05302, telephone 802-258-3143, e-mail [giving@worldlearning.org](mailto:giving@worldlearning.org)
- 2. Your gift was not made during the 2003–2004 fiscal year.** This edition of *Odyssey* lists only those gifts received between July 1, 2003 and June 30, 2004. If you made a gift before or after those dates, it is not listed in this edition.
- 3. You believe you gave a gift, but you are not sure.** If you think you made a gift to World Learning, The Experiment in International Living or the School for International Training, check your financial records or call the Development Office and we will be glad to check. Perhaps the gift was lost or not received. We can assist you with this. If you determine that it was not sent, you can mail it to us now and be recognized in the 2004–2005 fiscal year.



Photo: John Van Nostrand / Tanzania

## Honorary Gifts

Gifts were made in honor of these individuals between July 1, 2003 and June 30, 2004:

<i>Dr. Mario Pascale</i> William and Mary Arnold	<i>Dr. James Cramer</i> Robert and Pamela Adams Rosamond and Francois Delori Clare McMorris Sherry Mueller Marnie S. Pillsbury Susan Plimpton Ivan Tse	<i>Mr. Stephen Barefoot</i> Bay Beyond Everette and Jean Barefoot Ann Scala	<i>Ms. Lesley Greer</i> Gay and John Greer
<i>India '64 Experiment Group</i> James Botkin John and Christina Brooks Robert and Ellen Croog John and Deanna Horsley Kenneth Kastleman Frederick and Gretchen Knowles Franklin Levinson and Louise Cochran Jean Lynch David and Katherine Wilson	<i>Mr. Peter May</i> Karin Quick	<i>Mr. Stephen Lowey</i> Richard and Barbara Dannenberg	<i>Ms. Mary Gannon</i> Yuko Hamada Michele Rubino
<i>Mr. Gilbert Lessenco</i> Gayle Stratmann	<i>Mr. Robert Schweich</i> Tony Allen and Reina Smith Richard Burgheim Elizabeth and Herbert Heller Ellen Holmes and John Ryan Nina Myers Philip Oppenheimer and Mary Close Sandra Siegel Sally and Bernard Stein Catherine and Alexander Traykovski Michael and Louise Vick	<i>Mrs. Anne Esson</i> Susan and Gerald James	<i>Ms. Michele Rubino</i> Mary Gannon Yuko Hamada
		<i>Ms. Anne Iskryant</i> Cornelius and June Dwyer	<i>Ms. Sarah Chipps</i> Patricia Chipps
		<i>Ms. Cori Garrett-Goodyear</i> R. Garrett-Goodyear	
		<i>Ms. Elizabeth Christie</i> Cathy Yandell and Mark McNeil	
		<i>Ms. Jackie Fa'asisila</i> William and Kathryn Piper	

## Memorial Gifts

Gifts were made in memory of these individuals between July 1, 2003 and June 30, 2004:

<i>Dr. John Wallace</i> Herbert and Estelle Adler Stanley and Donna Borofsky Hollie Bowen and E. Love Kelly Brown Marilyn Bruton Eleanor Burke Charles and Nancy Butterfield Jerry Carbone Shirley Crosier Lionel Epstein and Elizabeth Streicher Daniel and Barbara Fawcett Thomas French Robert Gannett Stephen Goldberg Hildamarie Hendricks Albert and Lucille Jerard David and Sally Kennedy Robert King Marlene Kramer Wallace and Evelyn McLean David and Joan Murdoch Kathleen and Jules Pagano Mark and Elizabeth Richards Dorothy Rostov Mary and William Schmidt Roger and Marcia Simon	Patricia Verboom Constance Wallin Beatrice Ward Barry and Elsa Waxman Cheryl Wilfong and Bill McKim	<i>Mr. Paul Geier</i> Gabriele Geier	<i>Ms. Beth Zelman-Oishi</i> Melissa Hays
	<i>Mr. Henderson Riggs</i> Katharine and William Van Wie	<i>Mr. Robert Cash</i> Lynnette and Harvey Shields	<i>Ms. Evelyn Dailey</i> Howard and Judith Rubenstein
	<i>Dr. William Rotch</i> David Gestrich	<i>Mrs. Grace Davidson</i> Robert and Pamela Adams Samuel Bunker Sarah Epstein and Donald Collins Allan Hodgson Ellen Holmes and John Ryan Stephen and Nita Lowey Phyllis and David Oxman David and Joan Murdoch Mary Weidlein	<i>Ms. Judy Mello</i> Robert and Pamela Adams Kelly Brown Jerrold Keilson and Ellen Silver David and Sally Kennedy Sidney and Joan Lovett Peter May David and Joan Murdoch Susan Plimpton Wendy Redlinger Jane Rotch Robert Schweich Marcia and Davis Spencer Humphrey Tonkin and Jane Edwards
	<i>Mr. and Mrs. Albert Keidel Jr</i> David and Sally Kennedy	<i>Mr. John Walker and Mrs. Katharine Walker</i> Jonathan and Amy Walker	<i>Ms. Maureen Anderson</i> Eric Anderson
	<i>Mr. Clayton Clawson</i> Elizabeth Brownstein	<i>Mrs. Margaret Baynes</i> Richard Baynes	<i>Jean Balster</i> Family and Friends Lynn Balster Lontos David Balster Susan Balster Zazas
	<i>Mr. Guy Harris</i> David and Doris Lichtenstein	<i>Mrs. Mary Tweedy</i> Margot Egan Clare McMorris Ann Savage	
	<i>Mr. Jesse Swartout</i> David Ward and Alice Greenwald Ward		
	<i>Mr. Joseph Fanelli</i> Pirkko Fanelli		
	<i>Mr. Keith Smith</i> Jerold Goldberg and Donald Shaw		

*Foundations, Corporations & Organizations* National foundations, corporations and organizations are increasingly providing funding for World Learning programs. These commitments reflect a growing interest in our mission to foster peace and social justice. We offer our appreciation for their participation and generosity.

A. L. Tyler & Sons Inc  
 AD Henderson Foundation  
 Advisor Charitable Gift Fund  
 Alacritas Foundation  
 AMIDEAST  
 Archibald Family Foundation  
 Bay Beyond Inc  
 Berkshire Taconic Community Foundation  
 Bice Passavant Foundation  
 Bidwell Illustration & Design  
 Black Mountain Foundation  
 Blair Fund  
 Boston Foundation  
 Braeside Foundation  
 Brattleboro Savings and Loan  
 Brownington Foundation  
 Business Interiors  
 C E and S Foundation  
 California Community Foundation  
 Catherine and Paul Buttenwieser Foundation  
 Centre Congregational Church  
 Chapman Foundation  
 Charles P. and Lavinia S. Schwartz Foundation  
 Charles Schwab Corporation  
 Chloe Breyer Trust  
 Community Foundation for Greater Buffalo  
 Community Foundation of Greater Memphis  
 Compton Foundation  
 Dammann Fund  
 Davidson Hooker Fund  
 Desktop & Press  
 Dewitt Wallace Youth Travel Enrichment Fund  
 Diversity Initiative Fund  
 Doris and David Lichtenstein Foundation  
 Eveready Battery Inc  
 Fidelity Investments Charitable Gift Fund  
 Finney Foundation  
 Fleming Oil Company  
 Flora Family Foundation  
 Ford Foundation  
 Foundation for Jewish Philanthropies  
 Freeman Foundation  
 GDS Legacy Foundation  
 Geraldine R. Dodge Foundation  
 goingbarefoot Inc  
 Hamill Family Foundation  
 Harry Edison Foundation  
 Hartford Foundation  
 Havner Family Foundation  
 Henry B. Plant Memorial Fund  
 Henry L. and Grace Doherty Charitable Trust  
 Hess Foundation Inc  
 Howard P. Colhoun Family Foundation  
 James A. MacDonald Foundation  
 Jean and Henry Pollak Foundation  
 Jewish Communal Fund  
 John & Florence Lawrence Foundation  
 Lankton Family Foundation  
 Lansdowne Allied Youth Council  
 Lee Foundation  
 Living Springs Foundation  
 Lyon Travel Agency Inc  
 Madison Jewish Community Council  
 Mailrite Inc  
 Marpat Foundation Inc  
 Marsh USA Inc  
 Nellie Mae Education Foundation  
 Nelson B. Delavan Foundation  
 New York Community Trust  
 Nine Mountain Retreats  
 Open Society  
 Oriental Tours & Travel  
 Patty Foresman Foundation  
 Perth Trust  
 Peter Alford Foundation  
 PIM 62, Leadership and Management  
 PIM 63, Leadership and Management  
 Planetary Metamorphosis Foundation  
 PNC Advisors  
 Putnam Foundation  
 R. Julian and Margaret A. Stanley Charitable Trust  
 Renee B. Fisher Foundation Inc  
 Richards Group  
 Robert and Catherine Sykes Fund  
 Rockefeller Family & Associate  
 Roy A. Hunt Foundation  
 RPA Inc  
 Sam's Department Store  
 Selwyn Associates  
 Sharon D. Lund Foundation  
 Spirit of Enniskillen Trust  
 St. Michael's Episcopal Church  
 Starr Foundation  
 Stettenheim Foundation  
 Steve Thomas Associates  
 Teal Foundation  
 Thompson Trust  
 Tides Foundation  
 Trico Realty Inc  
 United Way of Burlington  
 US Trust  
 Vanguard Charitable Endowment  
 Vendemmia  
 Vermont Community Foundation  
 Veterinary Diagnostic  
 Warren Children Charitable Lead Trust  
 Woodlawn Foundation



*The Infinity Club* is a special group of supporters who have included World Learning, The Experiment in International Living, or the School for International Training in their estate plans. The Infinity Club takes its name from a design of antiquity that symbolizes the eternal promise of the human family. Because of its significance in religion and art throughout the world since the dawn of history, we have chosen this symbol to represent the significance of people around the world living together in harmony. We are deeply grateful to the Infinity Club members listed here, and hope their leadership will inspire others.

## INFINITY CLUB

Eric Hall Anderson  
Dorothea E. Atwell  
Stephen Barefoot  
Faith Barrington  
Carl Bauer  
Jane K. Beamish  
Mary Blair  
Joan Boyce  
Charles W. Bray  
Elizabeth Smith Brownstein  
Katherine Seavey Bryant  
Peggy Cash  
Elizabeth B. Conant  
Audrae R. Coury  
William Crocker  
Mary B. Davidson  
Larry and Jimmi Dawson  
Carolyn Dejanikus  
Betty Dodds  
Stephan Draganis  
Lelah Dushkin  
Judith Ehrman  
Russ and Milly Ellis  
Joan Elliston  
Sally Ellsworth  
Sarah Epstein  
George Ewan  
Alice Fick  
Suzanne FitzGerald  
Margaret Fohl  
Anonymous  
Francesca Galluccio-Steele

Amy Garcia  
Anonymous  
Susan Gutchess  
Susan Hagist  
Eleanor Hamric  
Scott and Blanche Harrison  
Jane Heinemann  
Bonnie Helms  
Mary Heltsley  
Patricia Hogan  
Barbara L. Ingerman  
Laura Kaiser  
Karen Kale  
David and Peggy Kehe  
Frances Alice Kleeman  
Carole B. Kropschot  
Joan B. LaCaille  
Cecilia Lacks  
Gordon and Janet Lankton  
Barbara and John Larson  
Anne Lauriat  
Morelle and Norman Levine  
Marion Fennelly Levy  
Tou Pao Lor  
Joseph Mandato  
Ida Manly  
Stephanie Maull  
Ann McLaughlin  
Janet Mersereau  
Sherry Mueller  
Eunice H. Murphy



Photo: Yoo Jean Han / Tanzania

Anne and Scott Nickerson  
Francesca Nicosia  
Anne M. Orton  
Marnie S. Pillsbury  
David P. Rein  
Susan Ritz  
Louise and David Rose  
Lisa and James Salzman  
Ann Imlah Schneider  
Marilyn Schwartz  
Robert Schweich  
Ernest Van Seasholes  
Isabel West Silverman  
Gary Smith  
Harriet Fullen Smith

Irene Smith  
Richard Stollenwerck  
Gladys Studenroth  
Susan Sunflower  
Donna Svirsky  
Masako Takada  
Robert Terry Jr  
Ann K. Weigand  
Jean Winchell  
Nancy H. Winter  
Robert Youker  
Betsy Hayes Zorski

A planned gift in the form of a trust, life insurance, gift annuity or bequest strengthens the institution's future while at the same time providing substantial benefits to the donor. For information about planned giving options, please contact the Development Office at (802) 258-3143 or visit us online at [www.ourworld.worldlearning.org](http://www.ourworld.worldlearning.org)

*Matching Gift Companies* Many corporations match the donations their employees, employees' spouses, retirees, directors, and board members make to charitable organizations. If your gift qualifies for a corporate match, the value of your gift may be doubled, or even tripled! The following is a list of companies that provided matching gifts to our donors during the 2004 fiscal year.

## COMPANIES

Abbott Laboratories Fund	ITT Industries Inc
Alcoa Foundation	Johnson & Johnson
Altria Employee Involvement Program	Markem Corporation
American Express	Merck Company Foundation
American International Group	Merrill Lynch
Bank of New York	Motorola
Baxter Allegiance Foundation	Nellie Mae
ChevronTexaco	Pepsico Foundation
Dayton Foundation	PPG Industries Inc
Emerson Electric Company	Prudential Foundation
ExxonMobile	Robert Wood Johnson Foundation
Fleet Matching Gifts Program	Rockefeller Foundation
Ford Motor Company	SBC Foundation
Gartner	Swanee Hunt
Gordon and Betty Moore Foundation	The Clorox Company Foundation
IBM Corporation	Verizon Foundation

## World Learning board names interim president

*continued from back page*

graduate programs, World Learning for Business and, of course, World Learning for International Development.”

“As interim president, I’ll be keeping the channels of communication open, talking with all stakeholders, and maintaining the momentum of initiatives taken in recent years,” said Chase. “I’ll also be overseeing the budgeting for the next fiscal year and spending the great majority of my time in Brattleboro at headquarters. I very much look forward to working with my former colleagues and with the board of trustees.”

Bob has spent all of his life in public service, largely in government, with a focus on international affairs. Prior

“As interim president, I’ll be keeping the channels of communication open, talking with all stakeholders, and maintaining the momentum of initiatives taken in recent years.”

to joining World Learning in 1992, he worked for the Agency for International Development in the US State Department and the UN.

Jim Cramer, who has been with World Learning for six years, announced his plans last March to step down as president. He agreed at the time to serve through the end of the calendar year to enable the organization to conduct a thorough search for a replacement.

Regarding the ongoing presidential search, the board’s search committee has a short list of finalists that it is assessing. “We are close to a final decision,” said Susan Plimpton, “and expect to make an announcement soon.” 

*World Learning's Board of Trustees* is the policymaking body of the institution. It has governance, fundraising, and fiduciary responsibilities. In addition, trustees provide generous financial support for World Learning's programs.

**Susan B. Plimpton**

*Chair*  
Minneapolis, MN

**David A. Murdoch**

*Chair Emeritus*  
Sewickley, PA

**Stephen Lowey**

*Chair Emeritus*  
Rye, NY

**Phyllis Watt Ingersoll**

*Trustee Emerita*  
Cambridge, MA

**Rosamond Delori**

*Vice Chair*  
Lincoln, MA

**Cheryl Winter Lewy**

*Vice Chair*  
Larchmont, NY

**Pamela D. Adams**

Lexington, MA

**Todd B. Alexander**

Atlanta, GA

**Charles R. Baquet III**

New Orleans, LA

**Samuel E. Bunker**

East Dummerston, VT

**Bob Chase**

*Ex officio*  
Brattleboro, VT

**Mary B. Davidson**

Somers, NY

**Andrea Dover**

San Mateo, CA

**Ann Friedman**

Bethesda, MD

**Deborah Friedman**

New York, NY

**J.K. Haynes**

Atlanta, GA

**Bush C. Helzberg**

Kansas City, MO

**Allan A. Hodgson**

London, England

**Judy S. Huret**

San Francisco, CA

**Stephen Juelsgaard**

Woodside, CA

**Sally Pyne Kennedy**

Ann Arbor, MI

**Nancy L. Lane**

New York, NY

**Wangari Maathai**

Nairobi, Kenya

**Sedia Macha**

Brattleboro, VT

**Tom McDonald**

Washington, DC

**Clare Tweedy McMorris**

New York, NY

**Sherry Lee Mueller**

Arlington, VA

**Phyllis S. Oxman**

Greenwich, CT

**John Richardson**

Bethesda, MD

**Robert J. Schweich**

New York, NY

**Thomas Silk**

San Francisco, CA

**Sue Ann Tempero**

Indianapolis, IN

**O. Rogeriee Thompson**

Cranston, RI

**Humphrey Tonkin**

West Hartford, CT

**Ivan Tse**

London, England

**Peter D. Van Oot**

Brattleboro, VT

**Sonali Weerackody**

Potomac, MD

OFFICERS OF THE CORPORATION

**Bob Chase**

Interim President  
World Learning

**Paula A. Harbecke**

Interim President  
Provost  
Chief Operating Officer  
School for International  
Training

**Pamela Baldwin**

Senior Vice President  
World Learning for  
International Development

**Steve Fitch**

Vice President  
Finance  
Treasurer

**Ellen A. Holmes**

Vice President  
Development

**Peter F. May**

Vice President  
General Counsel  
Secretary of the Corporation

**G. Roland Ransom**

Vice President  
Human Resources

**Laurie Richards**

Vice President  
Information Technology  
Chief Technology Officer

## World Learning board names Bob Chase interim president

With the presidential search in its final stages, the World Learning board of trustees named Bob Chase, a former World Learning senior vice president, to be interim CEO and president of World Learning effective January 1, 2005. At the same time, Paula Harbecke, currently provost at the School for International Training (SIT), will become interim president of SIT.



*Bob Chase*

Susan Plimpton, chair of the board, said that the Board's decision was unanimous. "Bob Chase's role is to provide a steady hand during the transition. He brings significant organizational experience to the job, as Bob led World Learning for International Development, in Washington, DC, from 1992–2002."

"Bob is very familiar with the people in our organization and its many domestic and overseas programs, including SIT Study Abroad, The Experiment, SIT's

*Bob Chase continued on page 26*

For more information contact:  
Development and Alumni Affairs  
Department  
World Learning  
Kipling Road, P.O. Box 676  
Brattleboro, VT  
05302-0676 USA

phone: USA toll-free  
(800) 257-7751 or (802) 258-3149  
email: [alumni@worldlearning.org](mailto:alumni@worldlearning.org)  
web site: [www.worldlearning.org](http://www.worldlearning.org)

Visit Our World, our online community, at:  
[www.ourworld.worldlearning.org](http://www.ourworld.worldlearning.org)



Kipling Road  
P.O. Box 676  
Brattleboro, VT  
05302-0676 USA

NONPROFIT ORG  
U.S. Postage  
**PAID**  
Putney VT  
Permit #1